



BOSTON PUBLIC HEALTH COMMISSION (BPHC)

Communicable Disease Control Division
 1010 Massachusetts Ave - Boston, MA 02118
 Phone: (617) 534-5611 - Fax: (617) 534-5905

Influenza Report - For the week ending 3/26/2016

10/1/2015 - 3/26/2016

Reported Cases (Boston Res.)	#
Influenza A	1090
Influenza B	159
Influenza A and B	3
Total	1252

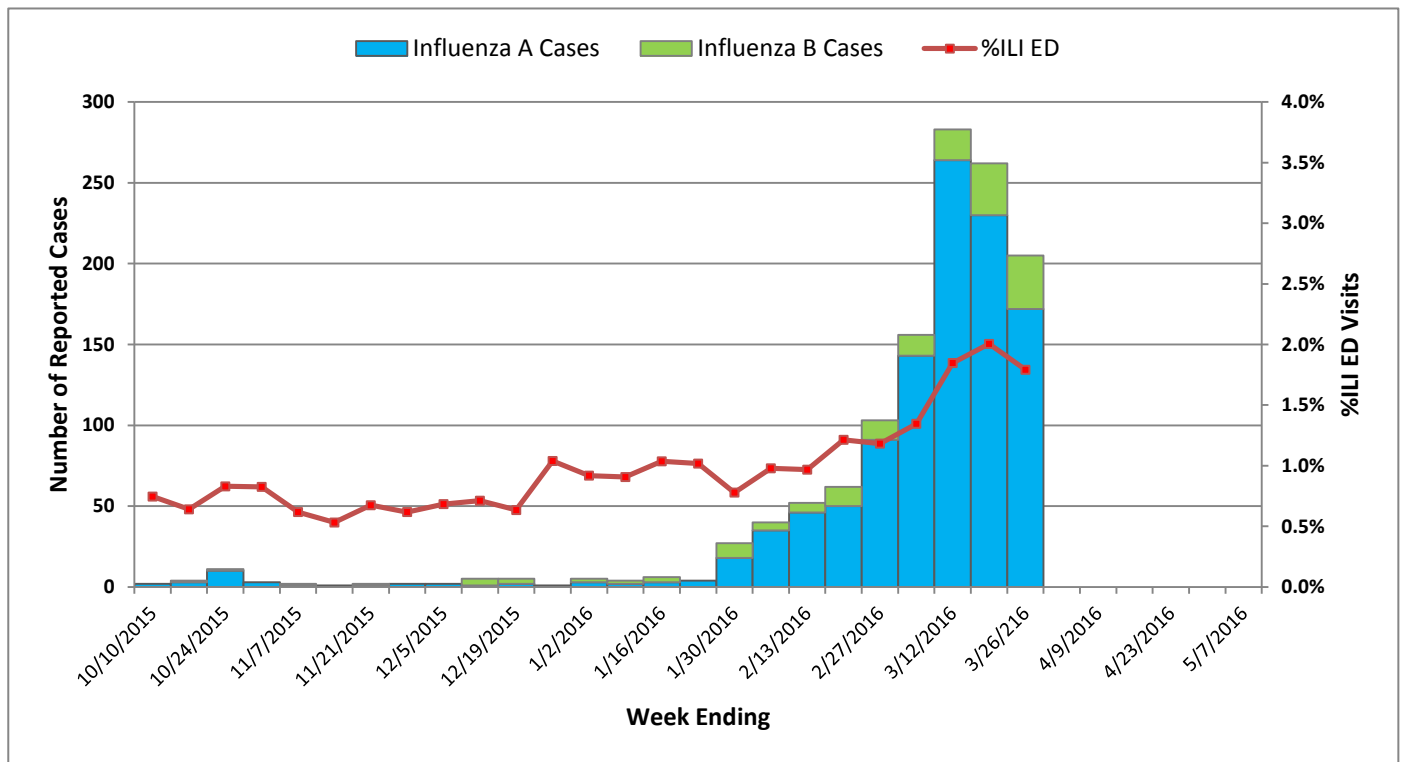
ED Surveillance	
This Week % ILI	1.76%
Average % ILI (since 10/1/2015)	0.98%

Summary: As of 3/26/2016, 1252 cases of laboratory-confirmed influenza were reported to the Boston Public Health Commission (BPHC) since 10/1/2015, with two hundred and thirty (18%) cases requiring hospitalization. Two influenza-associated deaths have been reported. Emergency department visits for influenza-like illness (ILI) comprised 1.76% of all ED visits this week.

BPHC reminds everyone that the influenza vaccine remains the best available tool for preventing illness.

Cases of influenza diagnosed in Boston and confirmed by any laboratory test must be reported to BPHC by calling (617) 534-5611 or faxing reports to (617) 534-5905.

Weekly Reported Influenza Cases and % ILI ED Visits, 2015-16 Season



The CDC has received reports of severe illness in some influenza cases. H1N1 viruses have predominated nationally in recent weeks, although H3N2 and influenza B viruses continue to co-circulate. The CDC is encouraging early treatment of those with influenza symptoms, especially hospitalized patients and patients with severe illness. Early antiviral treatment can reduce morbidity and mortality. For additional information and guidance, please click the following link:

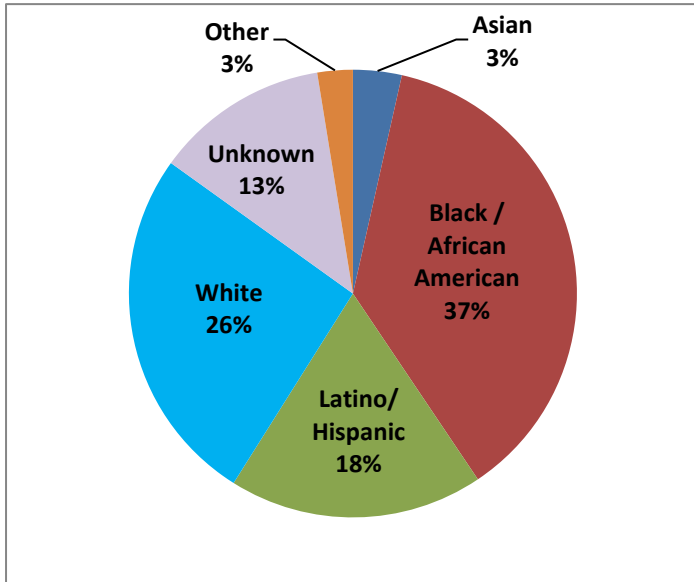
<http://emergency.cdc.gov/han/han00387.asp>



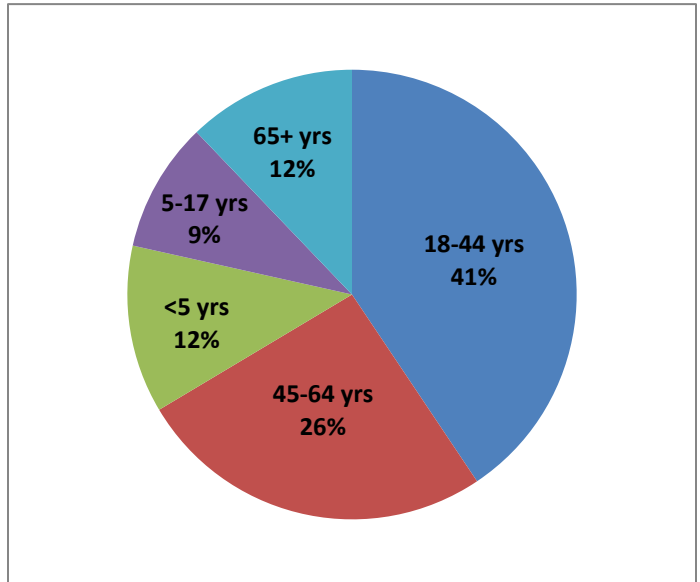
BOSTON PUBLIC HEALTH COMMISSION (BPHC)

Communicable Disease Control Division
 1010 Massachusetts Ave - Boston, MA 02118
 Phone: (617) 534-5611 - Fax: (617) 534-5905

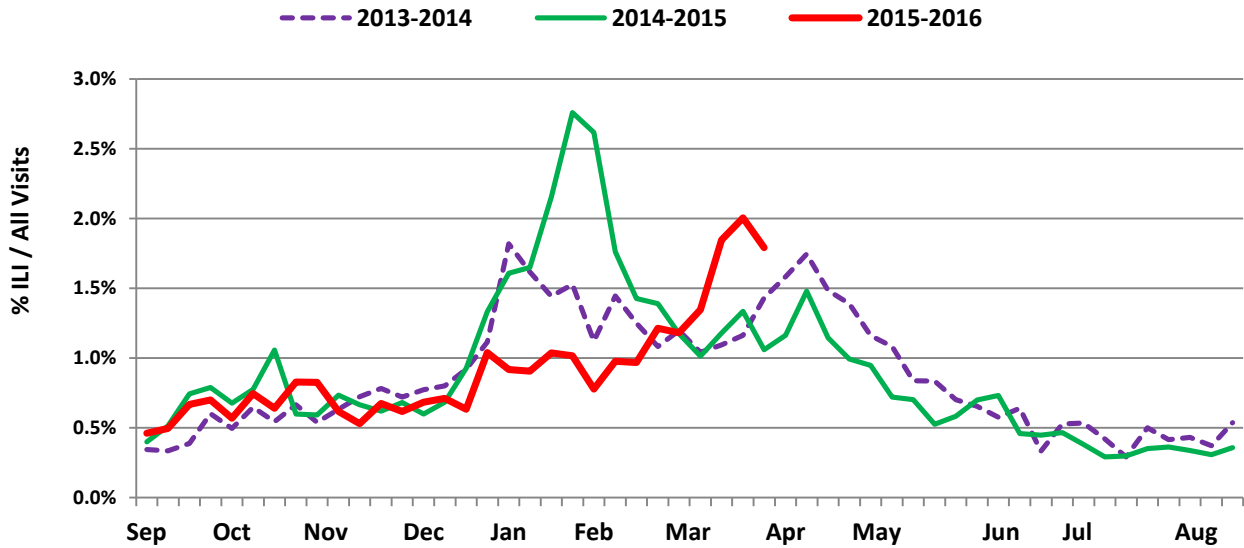
**Race/Ethnicity of Confirmed Influenza Cases,
 10/1/2015 - 3/26/2016, Boston Residents**



**Age Distribution of Confirmed Influenza Cases,
 10/1/2015 - 3/26/2016, Boston Residents**



Weekly % ILI ED Visits, 2013-2016



Influenza-like illness (ILI) is defined as "flu" OR "fever and a cough or sore throat" in the ED chief complaint as captured by the BPHC Syndromic Surveillance System.

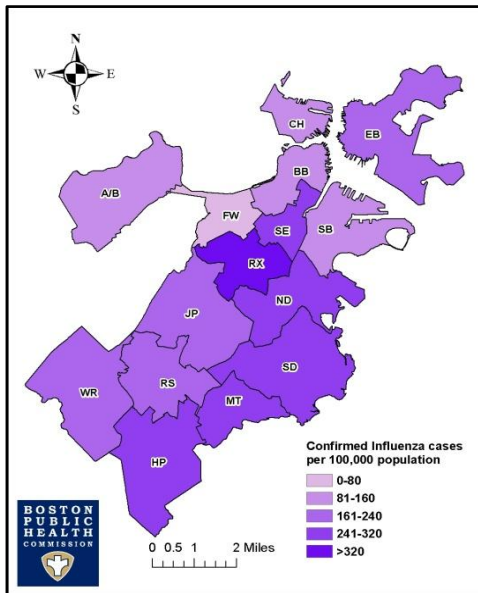


BOSTON PUBLIC HEALTH COMMISSION (BPHC)

Communicable Disease Control Division
 1010 Massachusetts Ave - Boston, MA 02118
 Phone: (617) 534-5611 - Fax: (617) 534-5905

Geographic Distribution

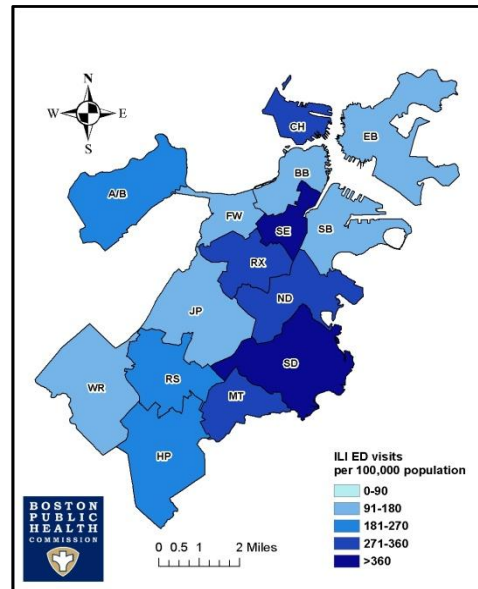
Rate of Confirmed Influenza Cases by Neighborhood per 100,000 Population October 1, 2015 - March 26, 2016



Neighborhood Legend

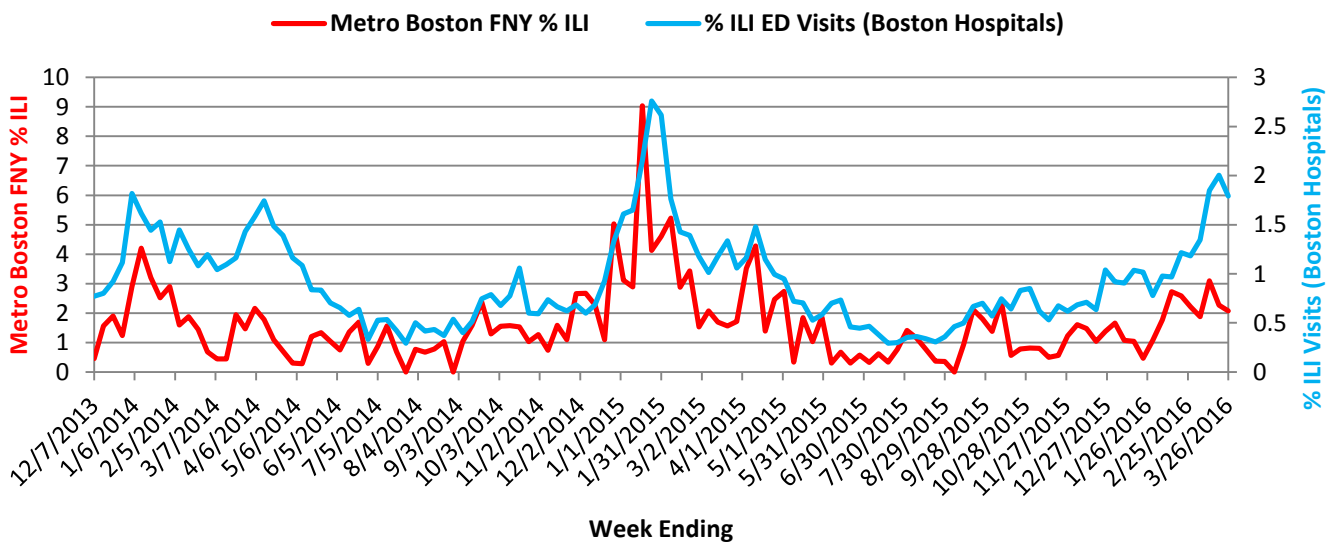
- A/B=Allston/Brighton
- BB=Back Bay
- CH=Charlestown
- EB=East Boston
- FW=Fenway
- HP=Hyde Park
- JP=Jamaica Plain
- MT=Mattapan
- ND=North Dorchester
- RS=Roslindale
- RX=Roxbury
- SB=South Boston
- SD=South Dorchester
- SE=South End
- WR=West Roxbury

Rate of ILI Syndrome ED Visits by Neighborhood per 100,000 Population October 1, 2015 - March 26, 2016



Comparison of ILI Using *Flu Near You (FNY)** Ill Data and ED Visits for ILI, 2013-2016

Comparison of Flu Near You (FNY) ILI Data and ED Visits for ILI (2013-2016)



**Flu Near You (FNY)* compiles weekly data of ILI activity in the United States. The data come from short, weekly internet-based surveys completed by voluntary participants who indicate whether they are healthy or have experienced any of a short list of symptoms.

The public may participate by enrolling in FNY at: <https://flunearyou.org/>