



# BOSTON PUBLIC HEALTH COMMISSION (BPHC)

Communicable Disease Control Division  
 1010 Massachusetts Ave - Boston, MA 02118  
 Phone: (617) 534-5611 - Fax: (617) 534-5905

## Influenza Report - For the week ending 4/9/2016

10/1/2015 - 4/9/2016

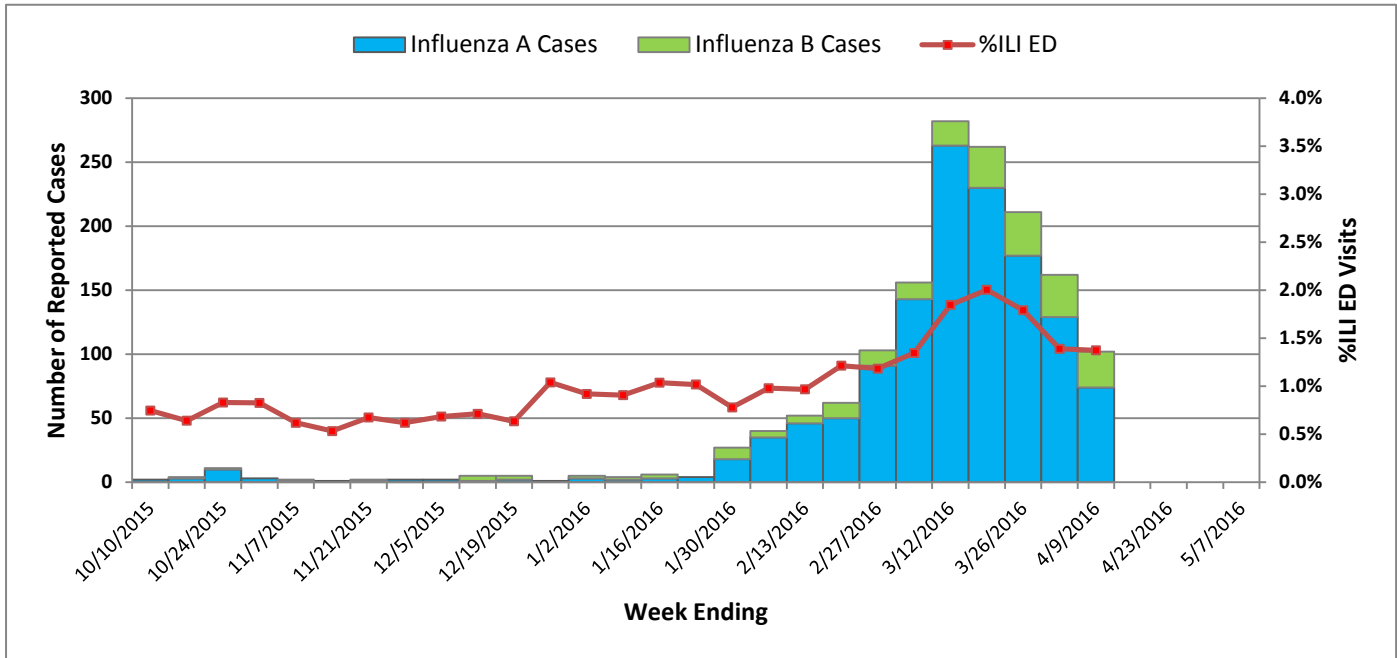
Reported Cases (Boston Res.)	#
Influenza A	1297
Influenza B	221
Influenza A and B	4
<b>Total</b>	<b>1522</b>

**Summary:** As of 4/9/2016, 1522 cases of laboratory-confirmed influenza were reported to the Boston Public Health Commission (BPHC) since 10/1/2015, with two hundred and sixty-four (17%) cases requiring hospitalization. Five influenza-associated deaths have been reported. Emergency department visits for influenza-like illness (ILI) comprised 1.37% of all ED visits this week.

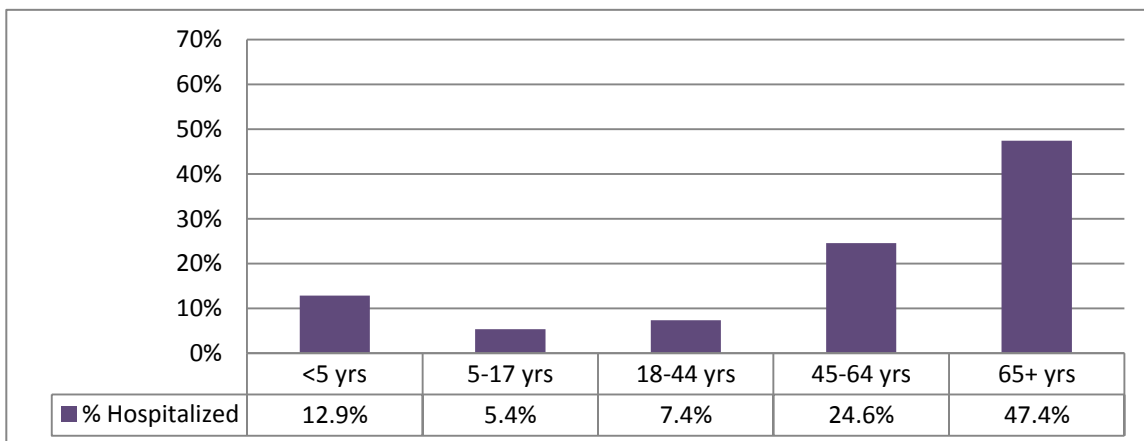
ED Surveillance	
This Week % ILI	1.37%
Average % ILI (since 10/1/2015)	1.02%

**Cases of influenza diagnosed in Boston and confirmed by any laboratory test must be reported to BPHC by calling (617) 534-5611 or faxing reports to (617) 534-5905.**

Weekly Reported Influenza Cases and % ILI ED Visits, 2015-16 Season



Percent Hospitalized by Age Group, 10/1/2015 - 4/9/2015, Boston Residents

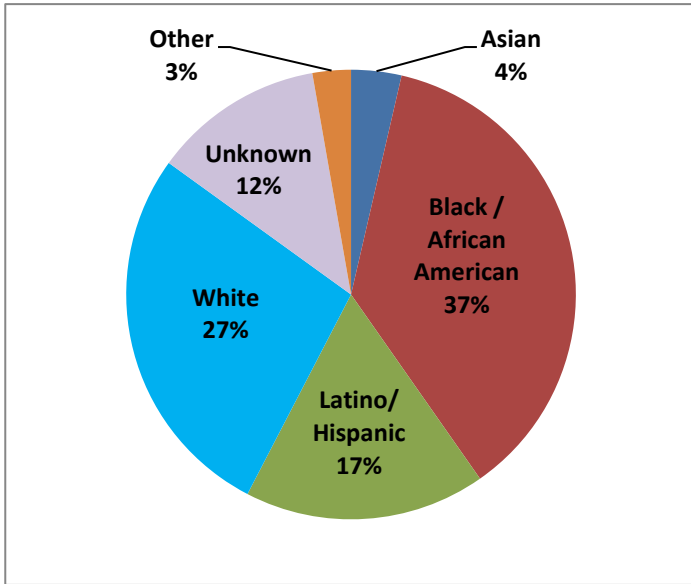




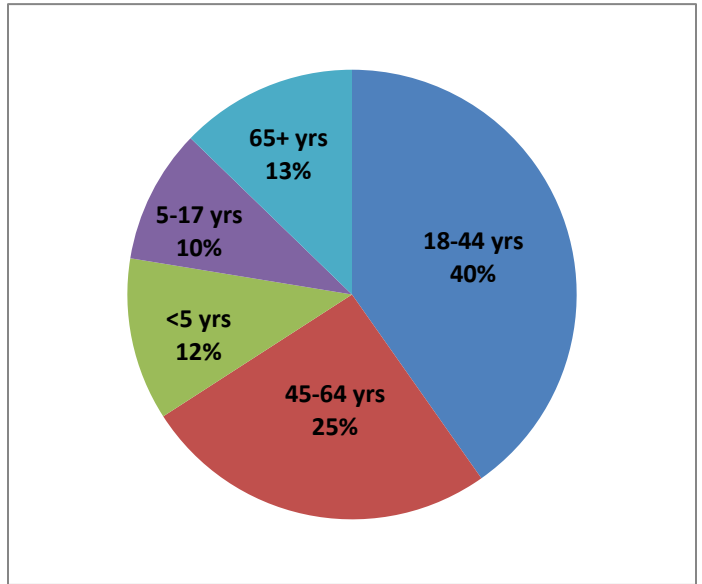
# BOSTON PUBLIC HEALTH COMMISSION (BPHC)

Communicable Disease Control Division  
 1010 Massachusetts Ave - Boston, MA 02118  
 Phone: (617) 534-5611 - Fax: (617) 534-5905

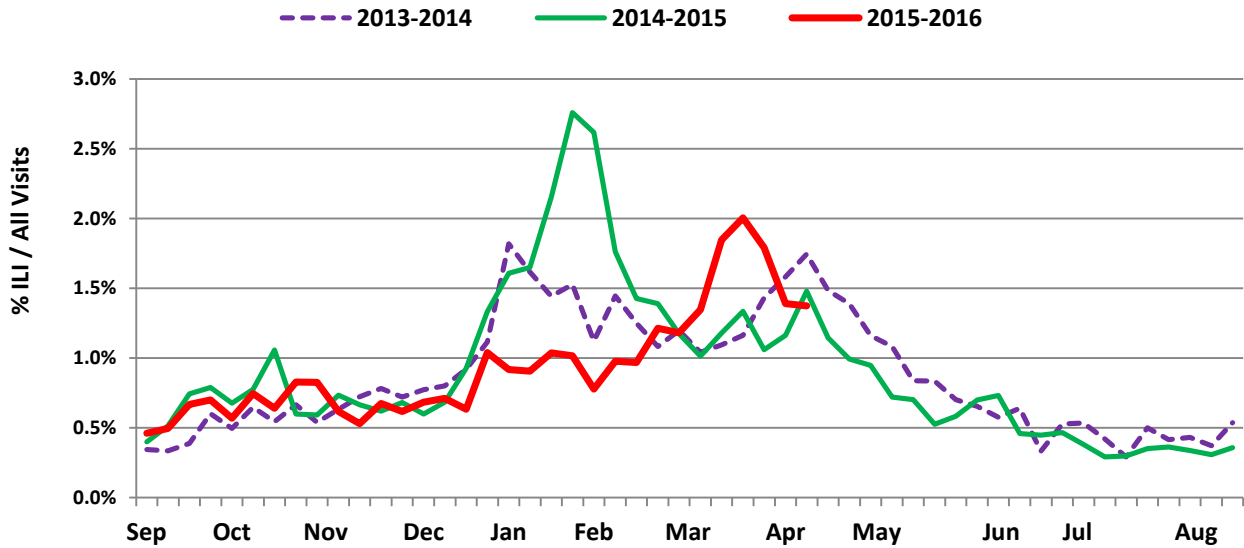
Race/Ethnicity of Confirmed Influenza Cases,  
 10/1/2015 - 4/9/2016, Boston Residents



Age Distribution of Confirmed Influenza Cases,  
 10/1/2015 - 4/9/2016, Boston Residents



Weekly % ILI ED Visits, 2013-2016



*Influenza-like illness (ILI) is defined as "flu" OR "fever and a cough or sore throat" in the ED chief complaint as captured by the BPHC Syndromic Surveillance System.*

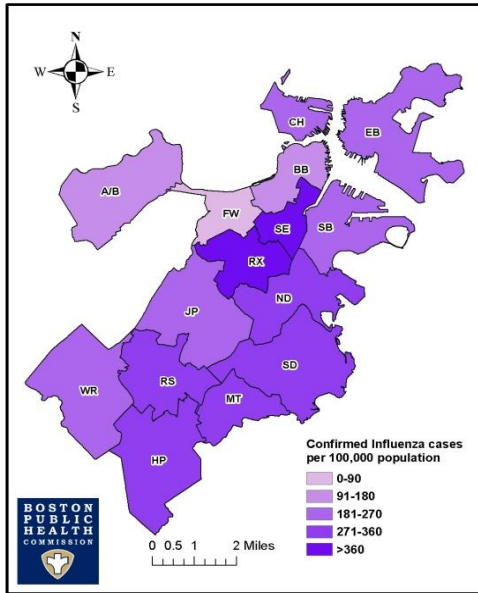


# BOSTON PUBLIC HEALTH COMMISSION (BPHC)

Communicable Disease Control Division  
 1010 Massachusetts Ave - Boston, MA 02118  
 Phone: (617) 534-5611 - Fax: (617) 534-5905

## Geographic Distribution

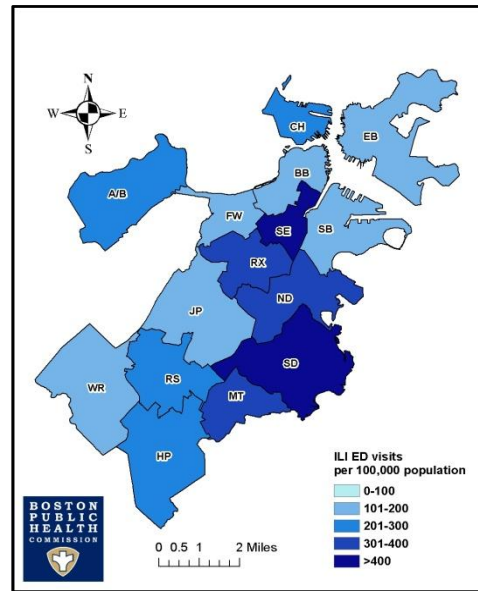
Rate of Confirmed Influenza Cases  
 by Neighborhood per 100,000 Population  
 October 1, 2015 - April 9, 2016



**Neighborhood Legend**

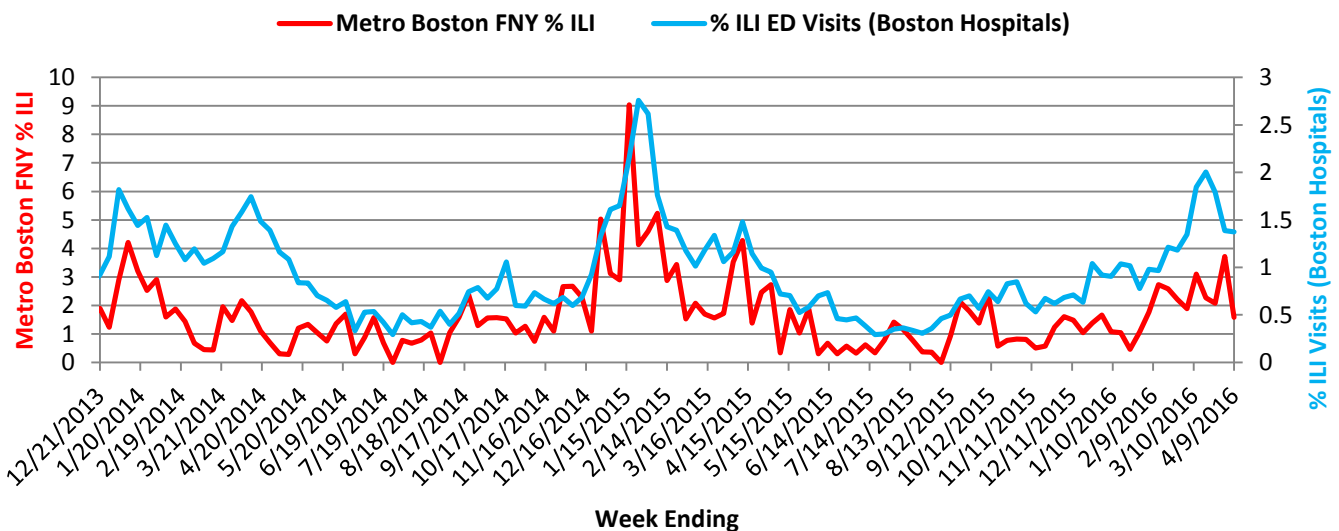
- A/B=Allston/Brighton
- BB=Back Bay
- CH=Charlestown
- EB=East Boston
- FW=Fenway
- HP=Hyde Park
- JP=Jamaica Plain
- MT=Mattapan
- ND=North Dorchester
- RS=Roslindale
- RX=Roxbury
- SB=South Boston
- SD=South Dorchester
- SE=South End
- WR=West Roxbury

Rate of ILI Syndrome ED Visits  
 by Neighborhood per 100,000 Population  
 October 1, 2015 - April 9, 2016



## Comparison of ILI Using *Flu Near You (FNY)\** Ill Data and ED Visits for ILI, 2013-2016

Comparison of Flu Near You (FNY) ILI Data and ED Visits for ILI (2013-2016)



\**Flu Near You (FNY)* compiles weekly data of ILI activity in the United States. The data come from short, weekly internet-based surveys completed by voluntary participants who indicate whether they are healthy or have experienced any of a short list of symptoms.

The public may participate by enrolling in FNY at: <https://flunearyou.org/>