



# BOSTON PUBLIC HEALTH COMMISSION (BPHC)

Communicable Disease Control Division  
 1010 Massachusetts Ave - Boston, MA 02118  
 Phone: (617) 534-5611 - Fax: (617) 534-5905

## Influenza Report - For the week ending 4/18/2015

10/1/2014 - 4/18/2015

Reported Cases (Boston Res.)	#
Influenza A	1826
Influenza B	373
Influenza A and B	17
Total	2216

ED Surveillance	
This Week % ILI	1.15%
Average % ILI (since 10/1/2014)	1.23%

**Summary:** As of 4/18/2015, 2216 cases of confirmed influenza were reported to the Boston Public Health Commission (BPHC), with 535 (24.1%) cases requiring hospitalization. Twenty-seven influenza-associated deaths have been reported. Emergency department visits for influenza-like illness (ILI) comprised 1.15% of all ED visits this week.

Influenza activity in Boston continues at low levels. Influenza B remains the predominant circulating strain. BPHC reminds everyone that the influenza vaccine remains the best available tool for preventing illness.

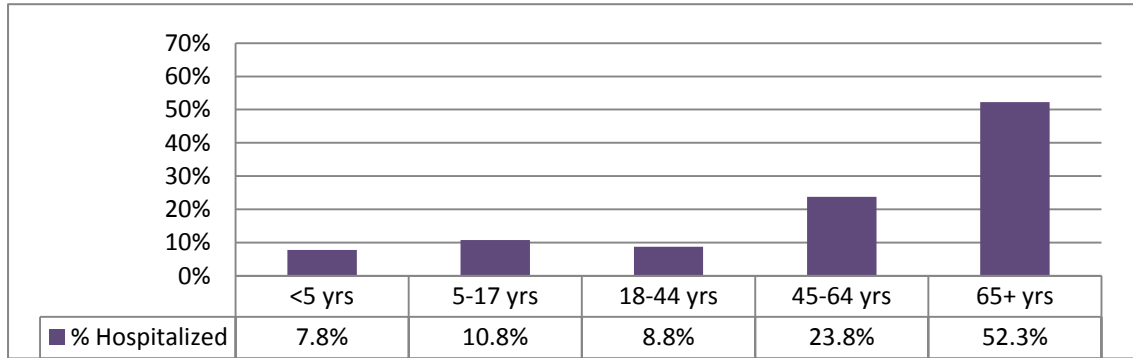
**Cases of influenza diagnosed in Boston and confirmed by any laboratory test must be reported to BPHC.**

### CDC Health Update Regarding Treatment of Patients with Influenza with Antiviral Medications

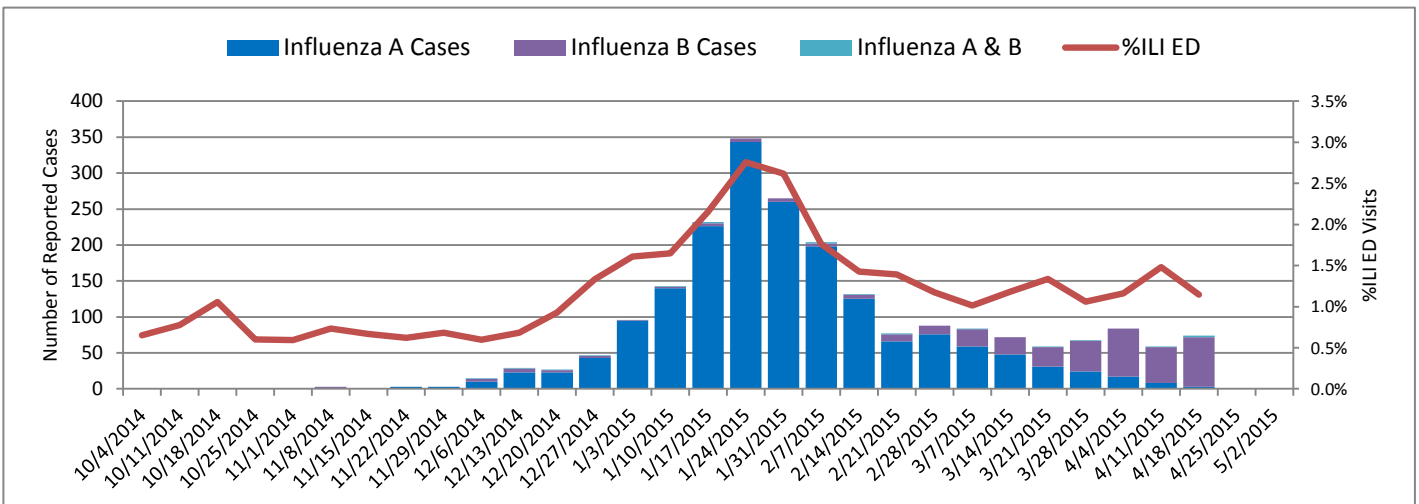
This CDC Health Update was issued on 1/9/2015:

- 1) to remind clinicians that influenza should be high on their list of possible diagnoses for ill patients, because influenza activity is elevated nationwide, and
- 2) to advise clinicians that all hospitalized patients and all high-risk patients (hospitalized or outpatient) with suspected influenza should be treated as soon as possible with an influenza antiviral medication. Clinicians should not wait for confirmatory influenza testing. Antivirals work best when given early, but therapeutic benefit has been observed even when treatment is initiated later.

### Hospitalization Rates by Age Group, Boston Residents, 10/1/2014 - 4/18/2015



### Reported Influenza Cases and % ILI ED Visits, 2014-15



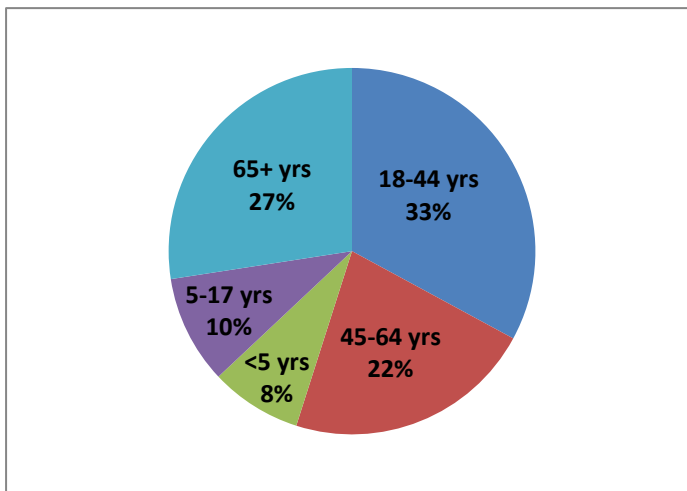
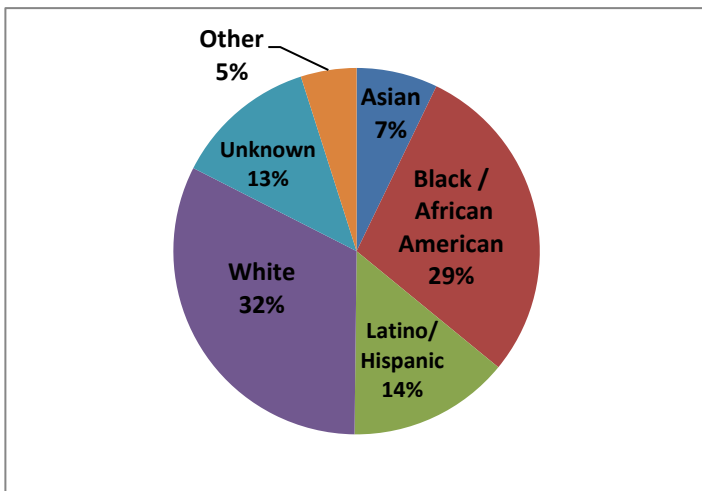


# BOSTON PUBLIC HEALTH COMMISSION (BPHC)

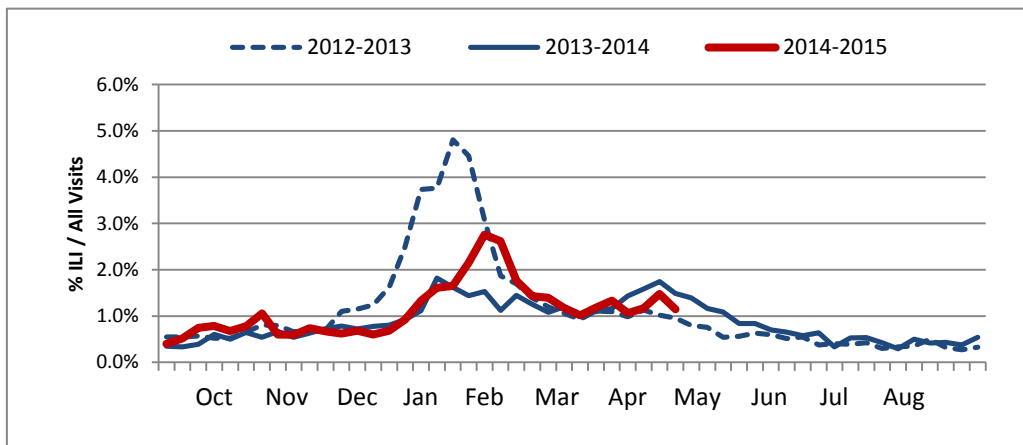
Communicable Disease Control Division  
 1010 Massachusetts Ave - Boston, MA 02118  
 Phone: (617) 534-5611 - Fax: (617) 534-5905

**Race/Ethnicity of Confirmed Influenza Cases, 10/1/2014 - 4/18/2015, Boston Residents**

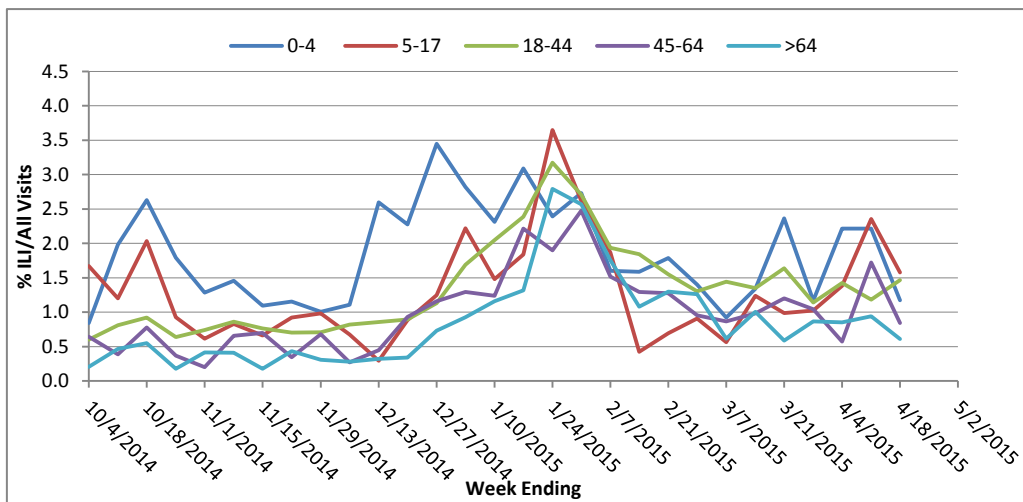
**Age Distribution of Confirmed Influenza Cases, 10/1/2014 - 4/18/2015, Boston Residents**



**Weekly Percentage of ED Visits for ILI, 2012-2015**



**Weekly Percentage of ED Visits for ILI by Age Group, 10/1/14 - 4/18/15**



Cases of influenza diagnosed in Boston and confirmed by any laboratory test must be reported to BPHC. Influenza like illness (ILI) is defined as "flu" OR "fever and a cough or sore throat" in the ED chief complaint as captured by the BPHC Syndromic Surveillance System.

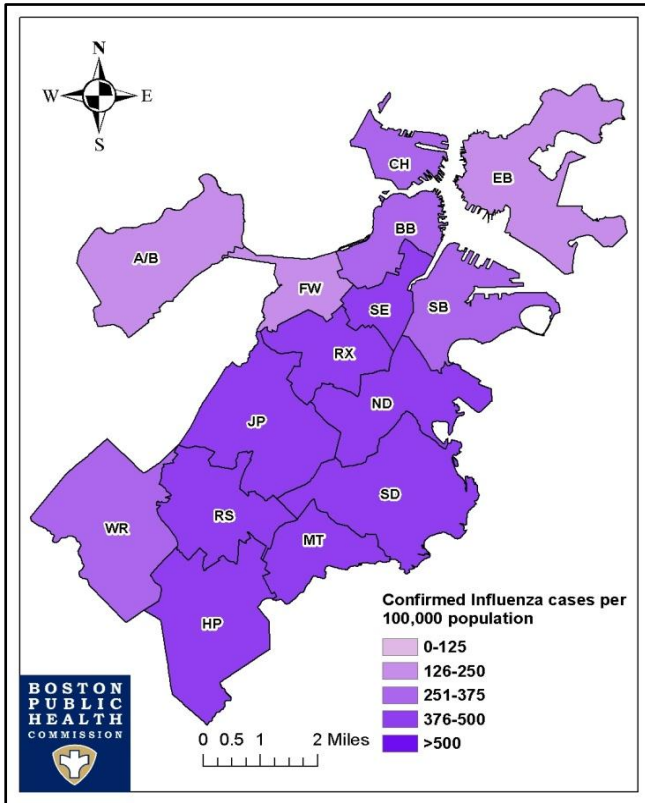


# BOSTON PUBLIC HEALTH COMMISSION (BPHC)

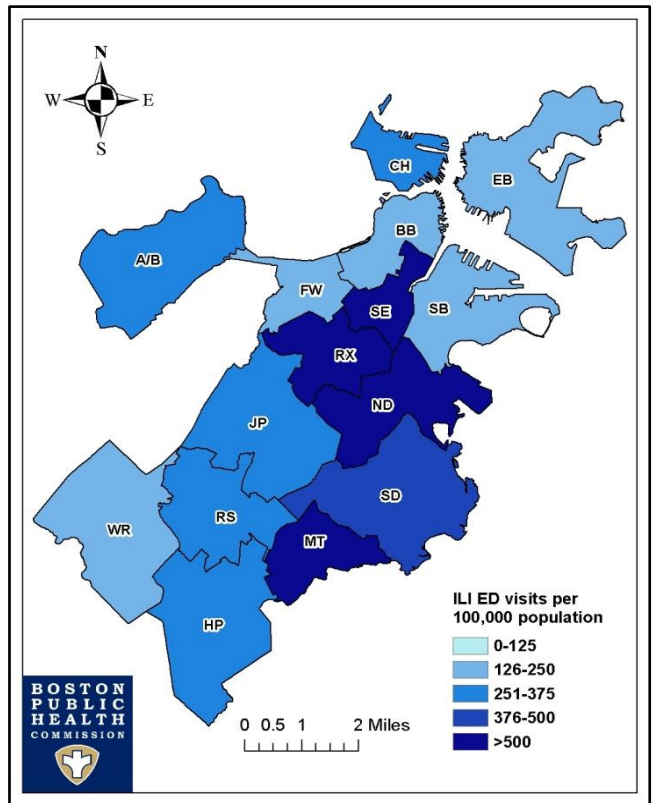
Communicable Disease Control Division  
 1010 Massachusetts Ave - Boston, MA 02118  
 Phone: (617) 534-5611 - Fax: (617) 534-5905

## Geographic Distribution

**Rate of Confirmed Influenza Cases  
 by Neighborhood per 100,000 Population  
 October 1, 2014 - April 18, 2015**



**Rate of ILI Syndrome ED Visits  
 by Neighborhood per 100,000 Population  
 October 1, 2014 - April 18, 2015**



- Neighborhood Legend**
- A/B*=Allston/Brighton
  - BB*=Back Bay
  - CH*=Charlestown
  - EB*=East Boston
  - FW*=Fenway
  - HP*=Hyde Park
  - JP*=Jamaica Plain
  - MT*=Mattapan
  - ND*=North Dorchester
  - RS*=Roslindale
  - RX*=Roxbury
  - SB*=South Boston
  - SD*=South Dorchester
  - SE*=South End
  - WR*=West Roxbury