



BOSTON PUBLIC HEALTH COMMISSION (BPHC)

Communicable Disease Control Division
 1010 Massachusetts Ave - Boston, MA 02118
 Phone: (617) 534-5611 - Fax: (617) 534-5905

Influenza Report - For the week ending 3/21/2015

10/1/2014 - 3/21/2015

Reported Cases (Boston Res.)	#
Influenza A	1767
Influenza B	139
Influenza A and B	13
Total	1919

ED Surveillance	
This Week % ILI	1.34%
Average % ILI (since 10/1/2014)	1.23%

Summary: As of 3/21/2015, 1919 cases of confirmed influenza were reported to the Boston Public Health Commission (BPHC), with 479 (25.0%) cases requiring hospitalization. Seventeen influenza-associated deaths have been reported. Emergency department visits for influenza-like illness (ILI) comprised 1.34% of all ED visits this week.

Although influenza activity is declining, the proportion of influenza B isolates has been steadily increasing over the past several weeks. BPHC reminds everyone who has not received the influenza vaccine that it is not too late to be vaccinated.

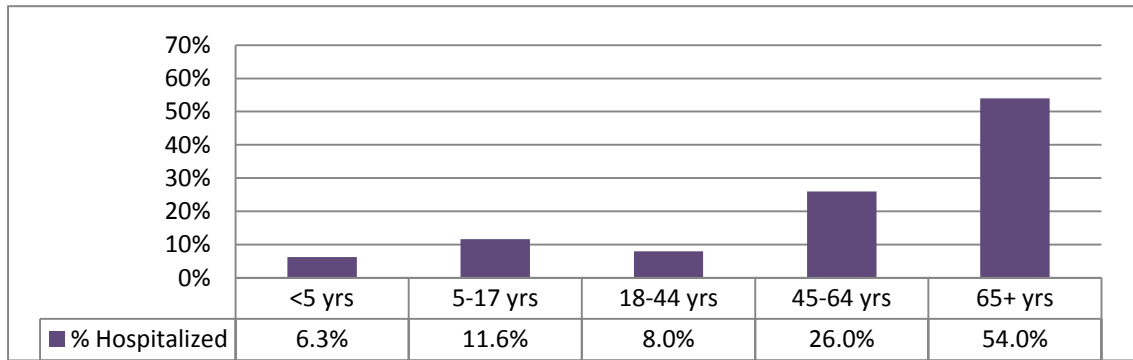
Cases of influenza diagnosed in Boston and confirmed by any laboratory test must be reported to BPHC.

CDC Health Update Regarding Treatment of Patients with Influenza with Antiviral Medications

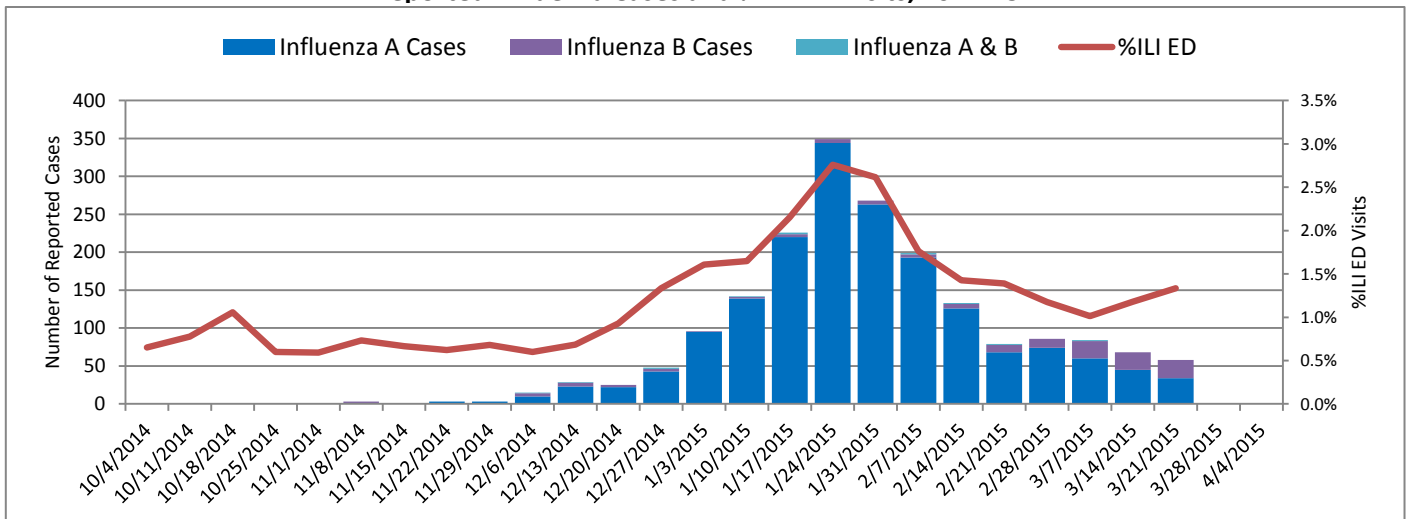
This CDC Health Update was issued on 1/9/2015:

- 1) to remind clinicians that influenza should be high on their list of possible diagnoses for ill patients, because influenza activity is elevated nationwide, and
- 2) to advise clinicians that all hospitalized patients and all high-risk patients (hospitalized or outpatient) with suspected influenza should be treated as soon as possible with an influenza antiviral medication. Clinicians should not wait for confirmatory influenza testing. Antivirals work best when given early, but therapeutic benefit has been observed even when treatment is initiated later.

Hospitalization Rates by Age Group, Boston Residents, 10/1/2014 - 3/21/2015



Reported Influenza Cases and % ILI ED Visits, 2014-15

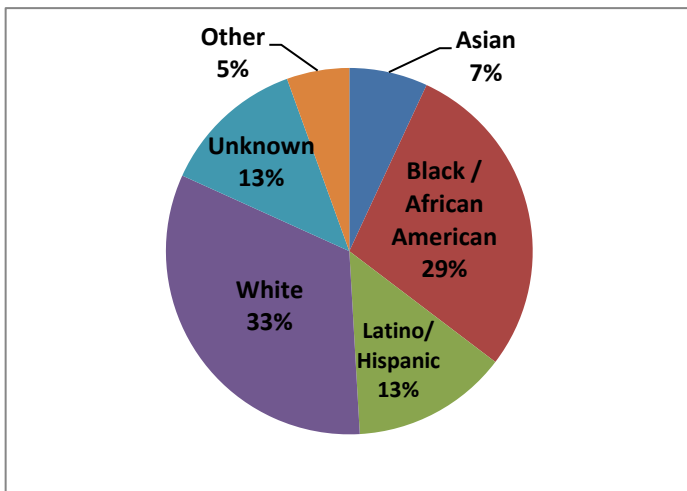




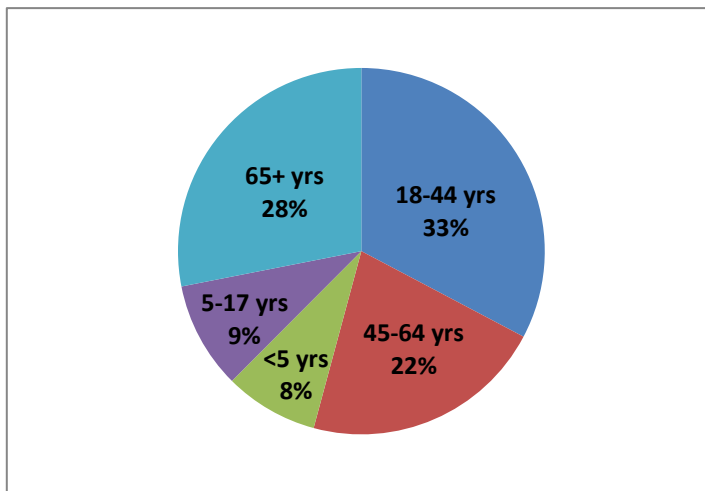
BOSTON PUBLIC HEALTH COMMISSION (BPHC)

Communicable Disease Control Division
 1010 Massachusetts Ave - Boston, MA 02118
 Phone: (617) 534-5611 - Fax: (617) 534-5905

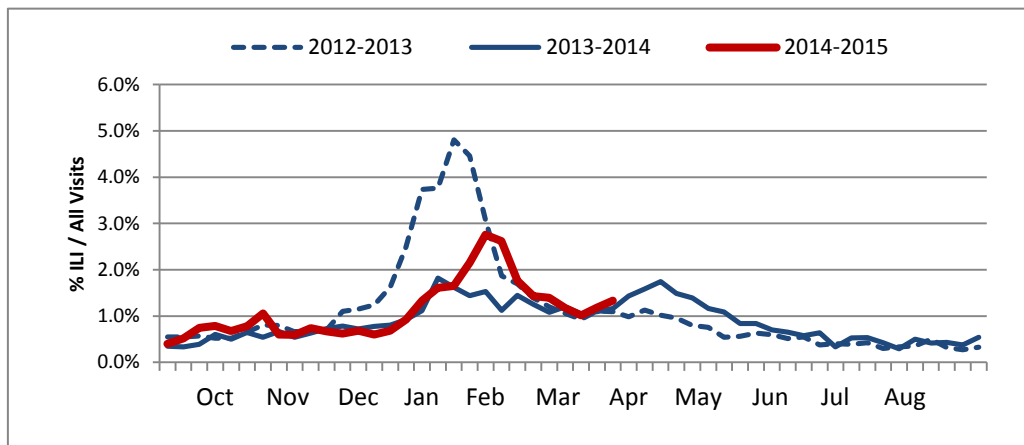
Race/Ethnicity of Confirmed Influenza Cases, 10/1/2014 - 3/21/2015, Boston Residents



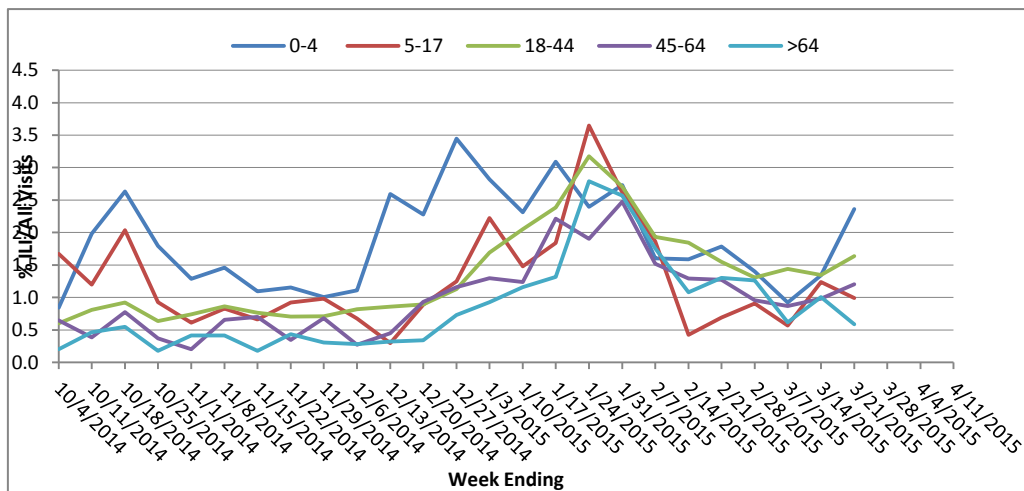
Age Distribution of Confirmed Influenza Cases, 10/1/2014 - 3/21/2015, Boston Residents



Weekly Percentage of ED Visits for ILI, 2012-2015



Weekly Percentage of ED Visits for ILI by Age Group, 10/1/14 - 3/21/15



Cases of influenza diagnosed in Boston and confirmed by any laboratory test must be reported to BPHC. Influenza like illness (ILI) is defined as "flu" OR "fever and a cough or sore throat" in the ED chief complaint as captured by the BPHC Syndromic Surveillance System.

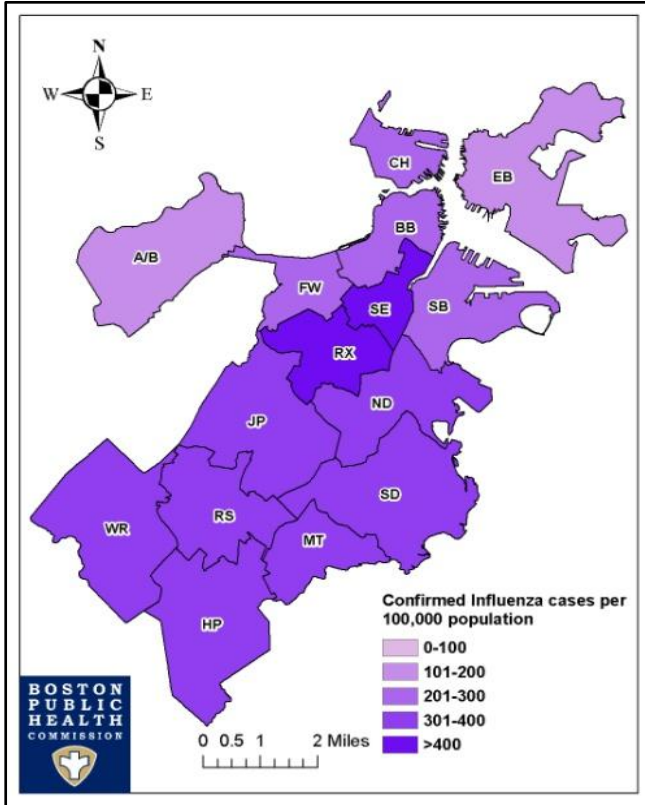


BOSTON PUBLIC HEALTH COMMISSION (BPHC)

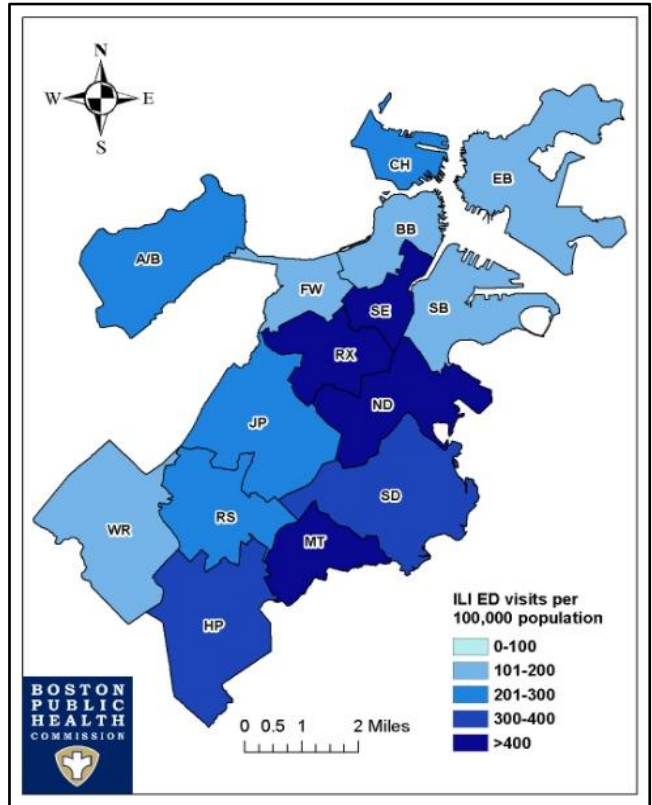
Communicable Disease Control Division
 1010 Massachusetts Ave - Boston, MA 02118
 Phone: (617) 534-5611 - Fax: (617) 534-5905

Geographic Distribution

**Rate of Confirmed Influenza Cases
 by Neighborhood per 100,000 Population
 October 1, 2014 - March 21, 2015**



**Rate of ILI Syndrome ED Visits
 by Neighborhood per 100,000 Population
 October 1, 2014 - March 21, 2015**



- Neighborhood Legend**
- A/B*=Allston/Brighton
 - BB*=Back Bay
 - CH*=Charlestown
 - EB*=East Boston
 - FW*=Fenway
 - HP*=Hyde Park
 - JP*=Jamaica Plain
 - MT*=Mattapan
 - ND*=North Dorchester
 - RS*=Roslindale
 - RX*=Roxbury
 - SB*=South Boston
 - SD*=South Dorchester
 - SE*=South End
 - WR*=West Roxbury