



BOSTON PUBLIC HEALTH COMMISSION (BPHC)

Communicable Disease Control Division
 1010 Massachusetts Ave - Boston, MA 02118
 Phone: (617) 534-5611 - Fax: (617) 534-5905

Influenza Report - For the week ending 1/25/14

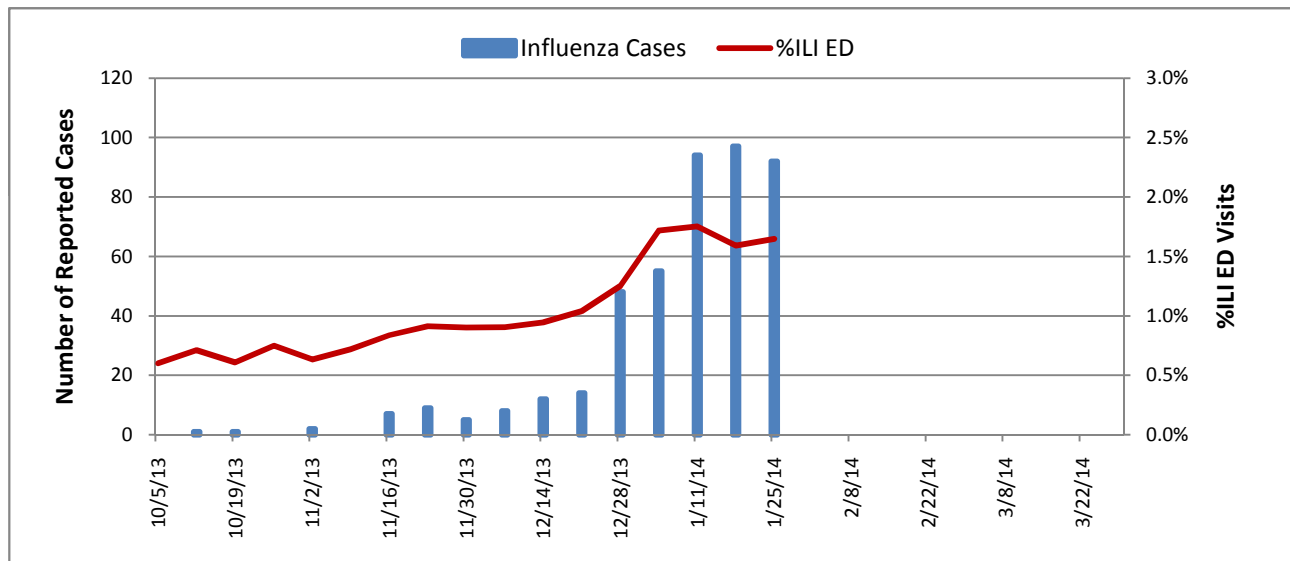
10/1/13-1/25/14

| Reported Cases (Boston Res.) | Total |
|------------------------------|-------|
| Influenza A | 430 |
| Influenza B | 23 |
| Total | 453 |
| ED Surveillance | |
| This Week % ILI | 1.65% |
| This Season Average % ILI | 0.93% |

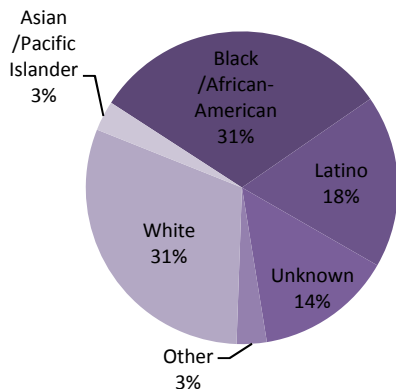
Summary: The week ending 1/25/14 showed a continuation of high levels of reported influenza cases in Boston residents. 92 cases were reported between 1/19/14 and 1/25/14, with a total of 453 cases reported since October 1st. 111 cases (25%) have been hospitalized. There have been three deaths, all in individuals over 65 years of age with underlying medical conditions. Emergency department (ED) visits for influenza-like illness (ILI) comprised 1.65% of all ED visits this week.

Cases of influenza diagnosed in Boston and confirmed by any laboratory test must be reported to BPHC.

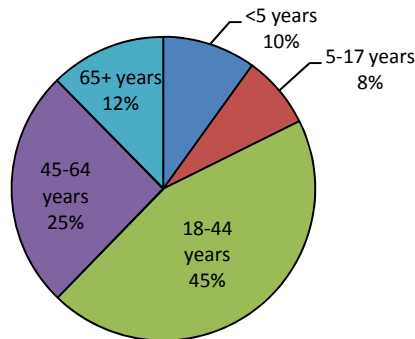
Reported Influenza Cases and %ILI ED Visits, 2013-14 Season



Race/Ethnicity of Confirmed Influenza Cases, 10/1/13 - Present, Boston Residents



Age Distribution of Confirmed Influenza Cases, 10/1/13 - Present, Boston Residents

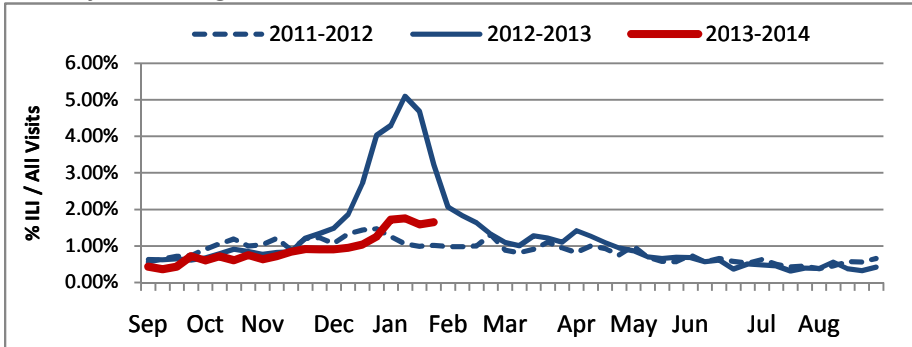




BOSTON PUBLIC HEALTH COMMISSION (BPHC)

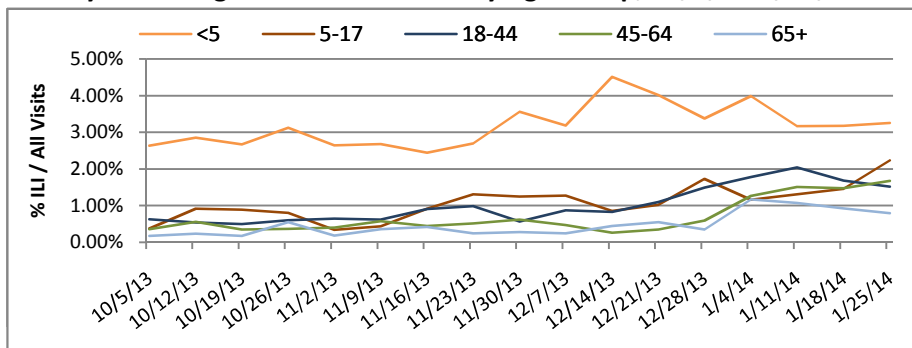
Communicable Disease Control Division
 1010 Massachusetts Ave - Boston, MA 02118
 Phone: (617) 534-5611 - Fax: (617) 534-5905

Weekly Percentage of ED Visits for ILI, 2010-2014



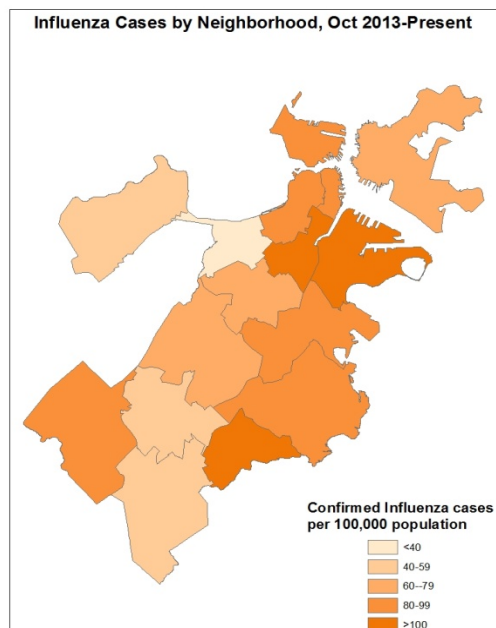
Cases of influenza diagnosed in Boston and confirmed by any laboratory test must be reported to BPHC. Influenza like illness (ILI) is defined as ("flu" OR "fever and a cough or sore throat") in the ED chief complaint as captured by the BPHC Syndromic Surveillance System.

Weekly Percentage of ED Visits for ILI by Age Group, 10/1/13-1/25/14



Geographic Distribution

Rate of confirmed influenza cases, per 100,000 population, by neighborhood, October 1 - Present



Rate of ILI syndrome ED visits, per 100,000 population, by neighborhood, October 1 - Present

