



BOSTON PUBLIC HEALTH COMMISSION (BPHC)

Communicable Disease Control Division

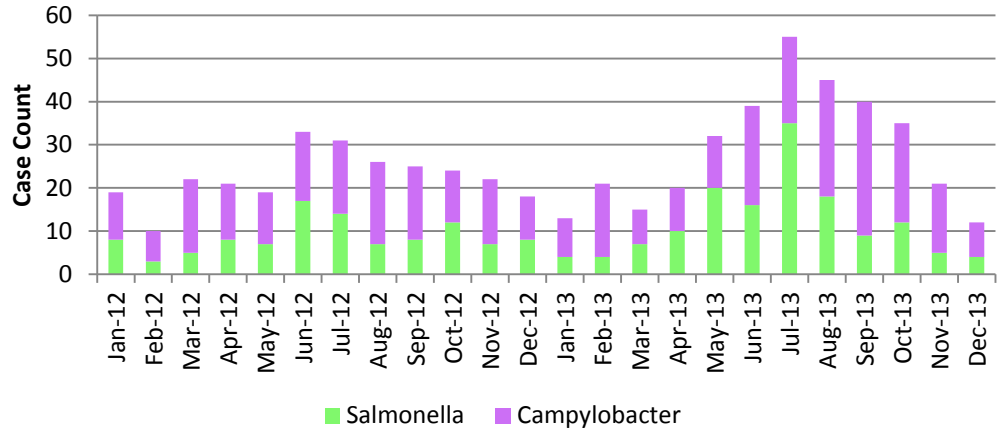
1010 Massachusetts Ave · Boston, MA 02118

Phone: (617) 534-5611 · Fax: (617) 534-5905

Salmonella and Campylobacter in Boston 2012-2013

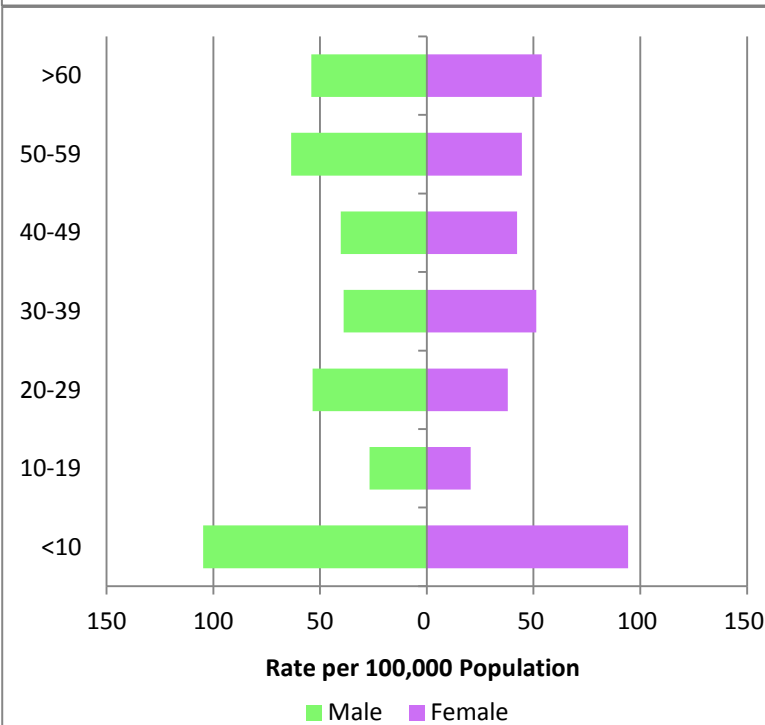
Foodborne illness is a common and preventable public health problem. Each year, 1 in 6 Americans gets sick by consuming contaminated foods or beverages. In many cases, a specific source of infection is not identified. In Boston, increases in Salmonella and Campylobacter occur every summer. Safe food handling practices and proper personal hygiene decrease the risk of illness.

Reported Cases of Salmonella and Campylobacter, Boston 2012-2013



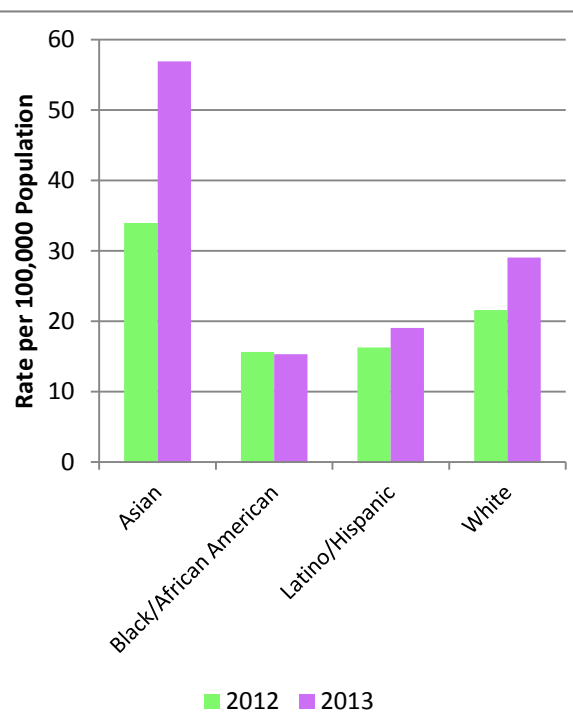
Reported Cases by Race, Gender, & Age

Rate of Salmonella and Campylobacter Infection by Age and Gender, Boston 2012-2013



Children under 10 years of age have the highest rates of infection.

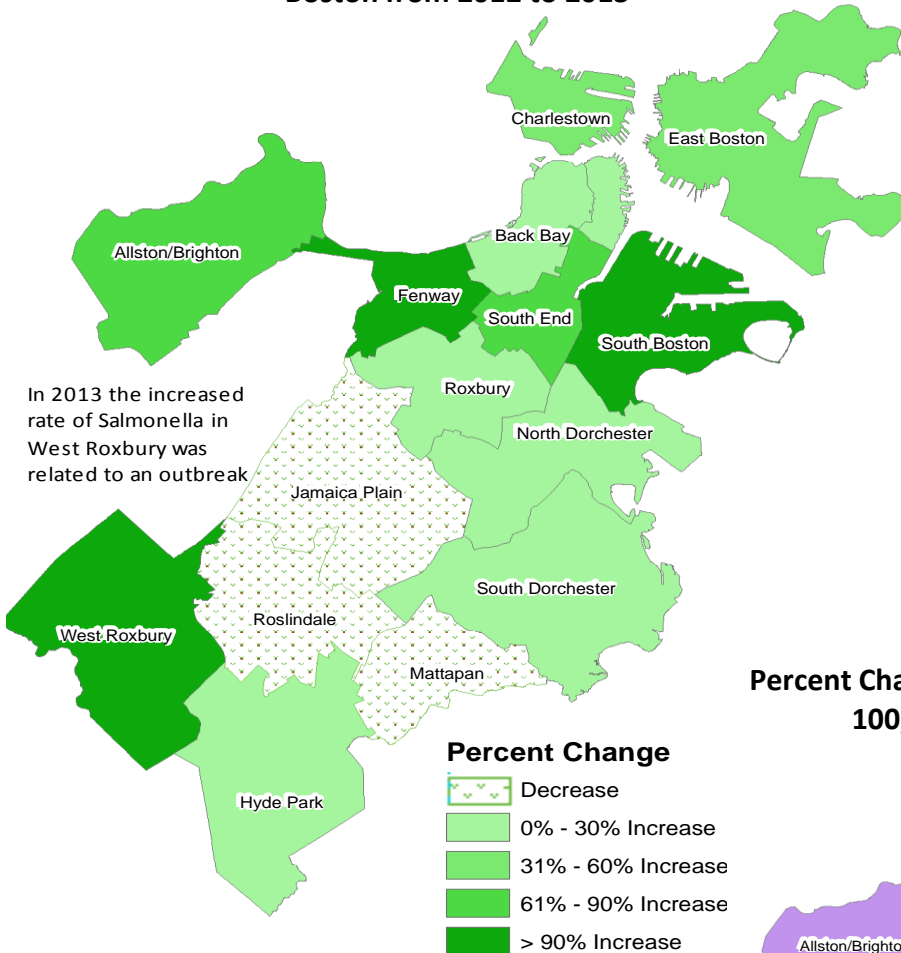
Rate of Salmonella and Campylobacter Infection by Race, Boston 2012-2013



The Asian community in Boston has experienced the highest rates of Campylobacter and Salmonella infection.

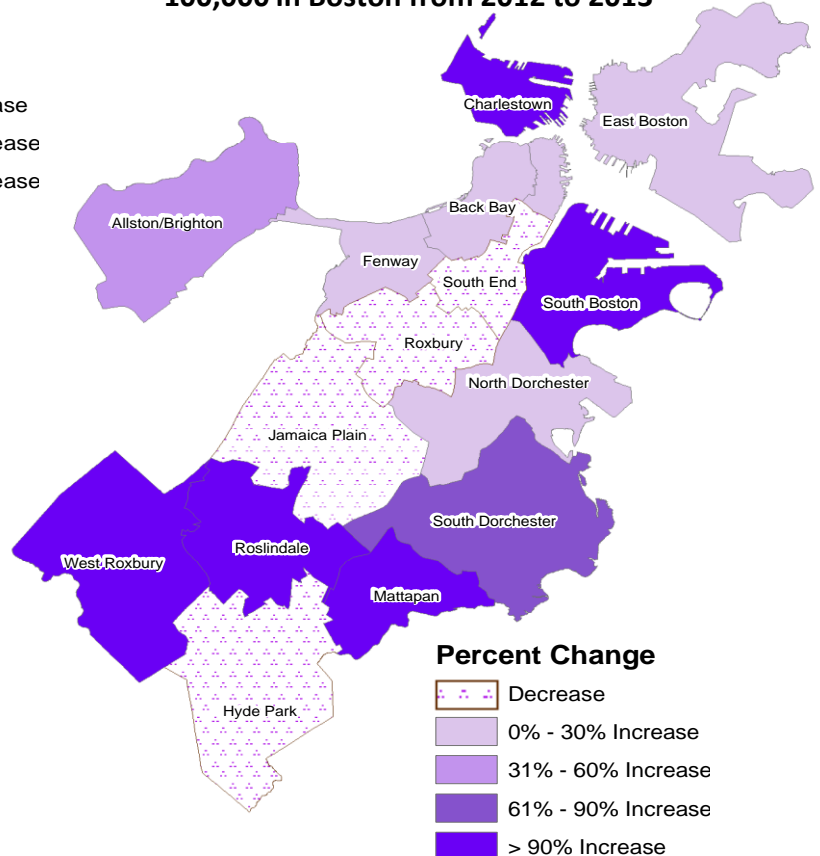
Rate of Salmonella and Campylobacter per 100,000 by Boston Neighborhood, 2012 & 2013

Percent Change in Salmonella Infection Rate per 100,000 in Boston from 2012 to 2013



Neighborhood	2012 Rate	Change	2013 Rate
Allston/Brighton	14.96	▲	25.42
Back Bay	20.00	▲	24.00
Charlestown	30.42	▲	42.58
East Boston	9.87	▲	14.81
Fenway	5.50	▲	20.16
Hyde Park	14.04	▲	17.55
Jamaica Plain	39.55	▼	31.07
Mattapan	23.47	▼	19.56
North Dorchester	10.12	▲	11.81
Roslindale	33.53	▼	13.41
Roxbury	7.40	—	7.40
South Boston	8.85	▲	35.41
South Dorchester	14.03	—	14.03
South End	32.47	▲	53.13
West Roxbury	19.33	▲	61.87
Boston Average	16.84	▲	23.32
National Average	13.82	▲	15.19

Percent Change in Campylobacter Infection Rate per 100,000 in Boston from 2012 to 2013



Neighborhood	2012 Rate	Change	2013 Rate
Allston/Brighton	25.42	▲	34.40
Back Bay	41.98	▲	51.98
Charlestown	18.25	▲	42.58
East Boston	44.44	—	44.44
Fenway	23.82	—	23.82
Hyde Park	28.08	▲	24.57
Jamaica Plain	39.55	▼	36.72
Mattapan	7.82	▲	27.38
North Dorchester	20.25	—	20.25
Roslindale	13.41	▲	36.88
Roxbury	24.87	▼	14.80
South Boston	17.70	▲	38.36
South Dorchester	15.44	▲	25.26
South End	67.88	▼	56.08
West Roxbury	11.60	▲	42.54
Boston Average	26.72	▲	33.03
National Average	14.30	▲	16.42

For more information about food poisoning and safe food handling, go to www.bphc.org/foodpoisoning

To watch BPHC's new summer safety videos, please visit www.bphc.org/summersafety

Healthcare providers in Boston are reminded to report all confirmed cases to BPHC:

Phone: (617) 534-5611 | Fax: (617) 534-5905