

2010-11 Influenza Season Review

Virus Type, cumulative count, 11/1/10-4/2/11

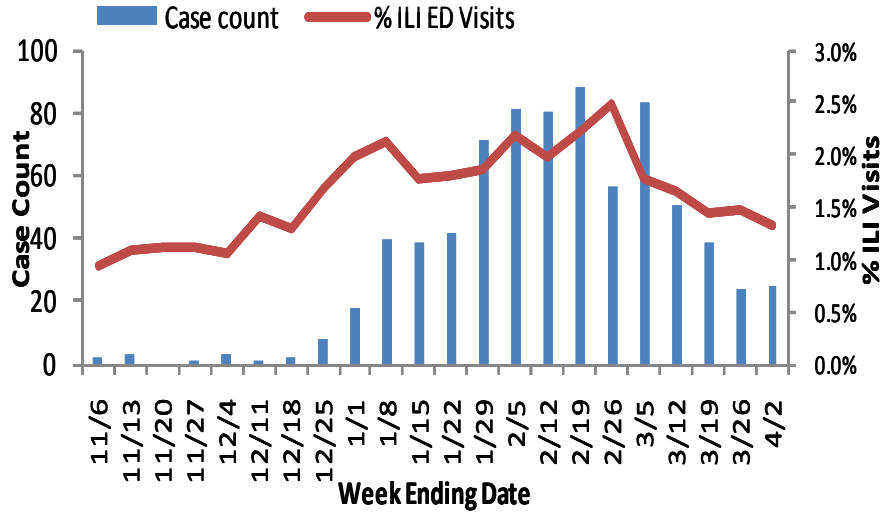
| Type | Total |
|----------------------------|-------|
| Influenza A, Non-specified | 622 |
| Influenza A, H3N2 | 37 |
| Influenza A, H1N1 | 34 |
| Influenza B | 65 |
| All Types | 758 |

Summary:

Between Nov 1, 2010 and Apr 2, 2011, 758 influenza cases in Boston residents were reported to the Boston Public Health Commission. Illness peaked in late February with 88 influenza cases reported during the week ending Feb 19, and the highest percentage of ED visits for influenza like illness (ILI) were reported the following week (2.5% of all visits).

Children <5 had the highest rate of ED visits for ILI, but 18-44 year olds had the largest percentage (38%) of reported cases. Black and Latino residents represent 38% of the Boston population, but accounted for 51% of all reported influenza cases in Boston residents.

Reported influenza cases in Boston residents and % of ED visits for ILI, 11/1/10-4/2/11



Cases of influenza diagnosed in Boston and confirmed by any laboratory test must be reported to BPHC. Influenza like illness (ILI) is defined as ("flu" OR "fever and a cough or sore throat") in the ED chief complaint as captured by the BPHC Syndromic Surveillance system.

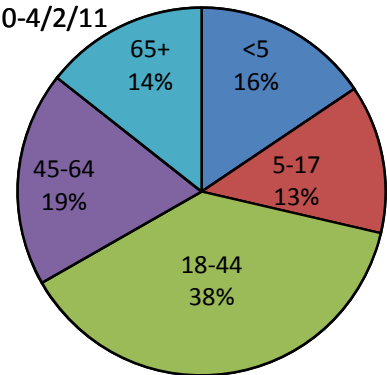
Reported Cases

Age distribution of reported influenza cases in Boston residents, cumulative count, 11/1/10-4/2/11

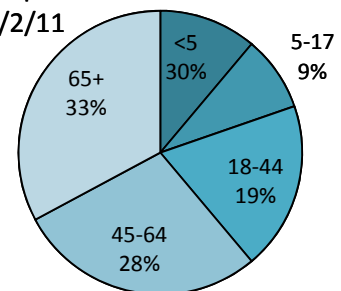
| Age Group (years) | Total Influenza Cases | | | |
|-------------------|-----------------------|------------------|--------------------------|------------|
| | Cases (%) | N | Cases Hospitalized N (%) | Deaths (N) |
| <5 | 118 (16) | 22 (11) | 1 | |
| 5-17 | 99 (13) | 17 (9) | 0 | |
| 18-44 | 289 (38) | 38 (19) | 1 | |
| 45-64 | 143 (19) | 56 (28) | 1 | |
| 65+ | 109 (14) | 65 (33) | 1 | |
| TOTAL | 758 (100) | 198 (100) | 4 | |

Of the 758 confirmed Boston influenza cases, 29% were under the age of 18. Twenty-six percent of all reported influenza cases in Boston residents were hospitalized, with highest rates in those >65 years old.

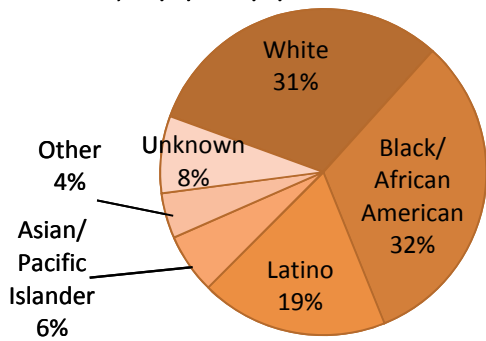
Age distribution of confirmed influenza cases in Boston residents, 11/1/10-4/2/11



Age distribution of hospitalized influenza cases in Boston residents, 11/1/10-4/2/11



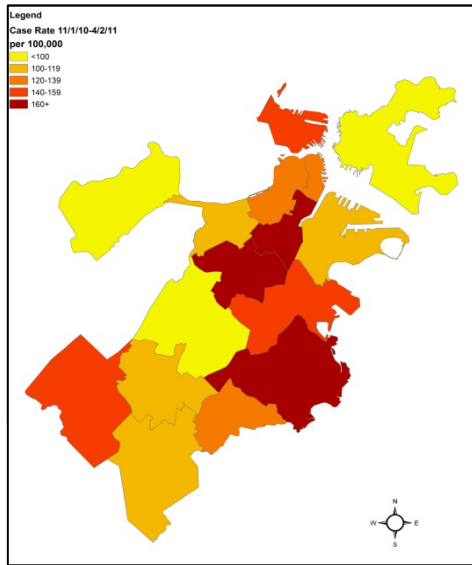
Race/Ethnicity distribution of confirmed cases in Boston residents, 11/1/10-4/2/11



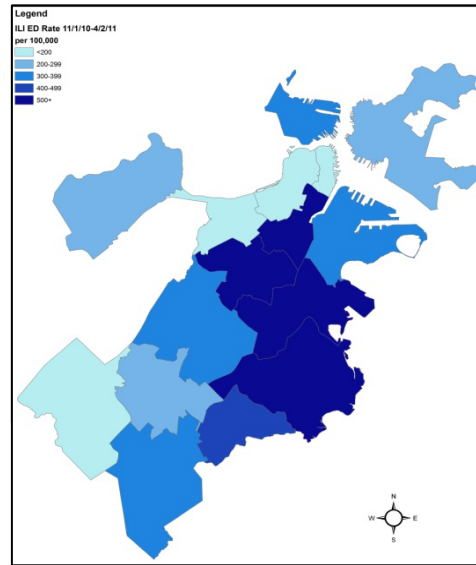
Blacks and Latinos account for 38% of the Boston population. Of the total reported influenza cases among Boston residents, 51% were Black or Latino.

Geographic Distribution

Cumulative rate of confirmed cases, per 100,000 population, by neighborhood, 11/1/10-4/2/11



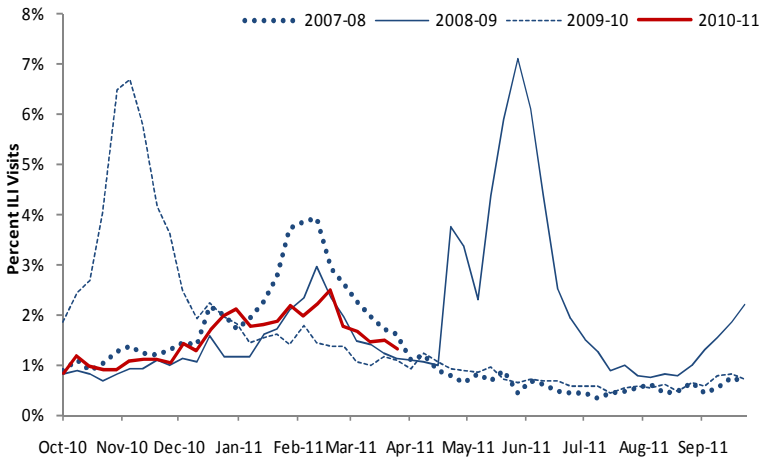
Cumulative rate of ILI ED visits, per 100,000 population, by neighborhood, 11/1/10-4/2/11



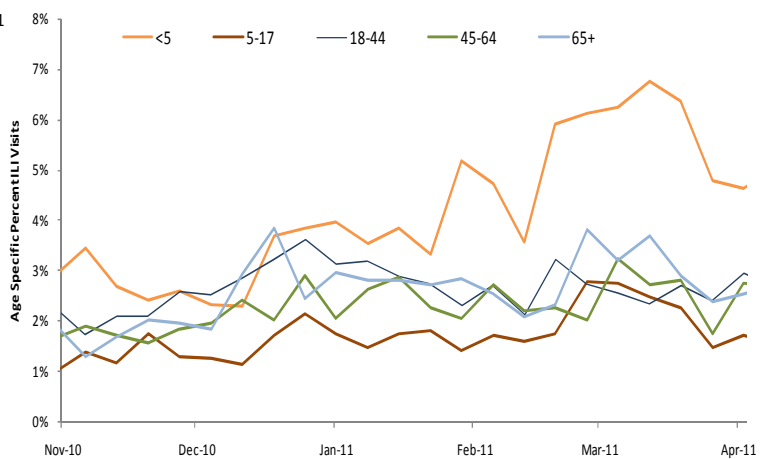
Reported cases were highest in South End, Roxbury, and South Dorchester. ILI rates followed a similar pattern with the highest rates in South End, Roxbury, and North and South Dorchester.

Syndromic Surveillance Over the Years

Percentage Weekly ILI ED Visits, 2007-2011



Percentage Weekly Age Specific ILI ED Visits, 2007-2011



ILI accounted for 1.6% of all ED visits between 11/1/10 and 4/2/11 (3,474 total ILI visits) compared to 2.5% in 2009-10, 1.5% in 2008-09, and 2.2% in 2007-08.