

Executive Office Report March 2020 Board Meeting



PRIORITY AREA

01



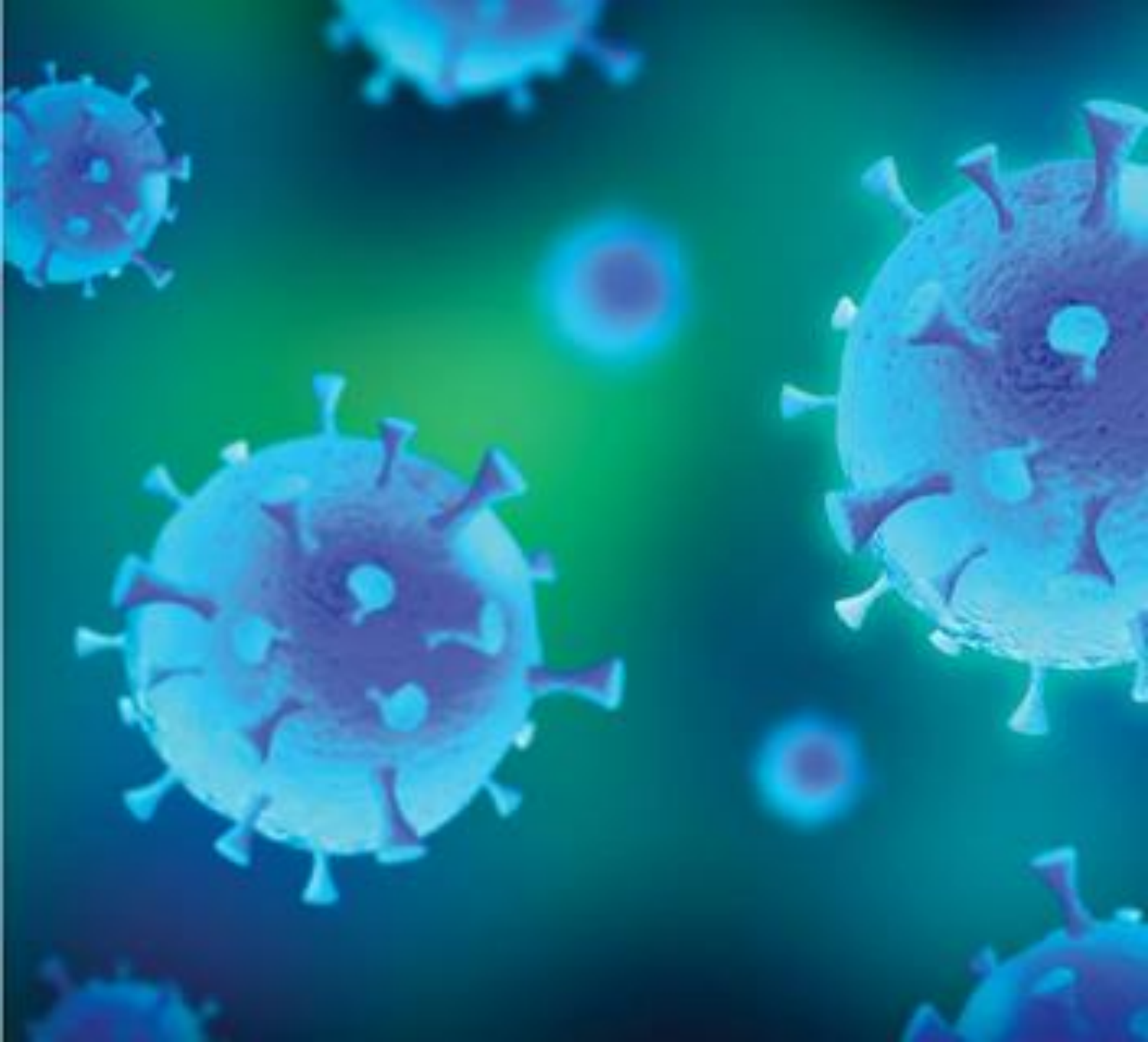
RACIAL JUSTICE AND
HEALTH EQUITY

Goal: Make BPHC a model for racial justice and health equity that advances our vision of achieving optimal health and well-being for all Boston residents.

H.1971/H.1907/H.1915, “An Act relative to conducting fetal and infant mortality review”: This is exciting, particularly for our Community Action Network which has been championing the bill. You may recall that this bill made substantial progress last session.

H.1949/S.1334, “An Act to reduce racial disparities in maternal health”: The amended text that was reported out reflects the diligent work of the Maternal Mortality and Morbidity Coalition, which BPHC convenes, and which has been working to strengthen and advocate for this bill over the past year.

Intergovernmental Relations Update



COVID-19 BPHC Response

UPDATED 3.4.20 AT 12PM

Current COVID-19 Data

2020 MAR 03 | Daily Sit Rep

Date	Deaths	Global	US	MA
28 – Feb	2867	83869	62	1
29 – Feb	2941	85994	68	1
1 – Mar	2996	88382	76	1
2 – Mar	3085	90284	100	1
3 – Mar	3159	92818	118	2

COVID-19

3/3/20 at 6pm

Community Transmission in the US

- 2/26/20 the CDC confirms the first possible community transmission of COVID-19 in California.
- Cases in California, Oregon and Washington state suggest ongoing community transmission.
- States with any Confirmed and Presumptive COVID-19 Cases:
 - Arizona, California, Florida, Georgia, Illinois, Massachusetts, New Hampshire, New York, North Carolina, Oregon, Rhode Island, Washington, Wisconsin
- Currently, there is no evidence to suggest that there is community transmission in the Commonwealth of Massachusetts.

Current COVID-19 Massachusetts Data

- Since January 2020, 719 people have been subject to self-quarantine in Massachusetts
 - Currently, 470 of those have completed monitoring and are no longer under quarantine
 - 249 individuals are currently undergoing monitoring/under quarantine
- On February 1, 2020 BPHC confirmed the first case of COVID-19 in a Boston resident returning from China.
- As of 3/3/20, Mass. Department of Public Health is monitoring a presumptive case of COVID-19 in Norfolk County.
- As of 2/28/20 MDPH began testing for COVID-19 at the State level.

COVID-19

3/3/20 at 8am



Boston Profile

Population

- Resident Population of 695,926
- Daytime Population of 1.2 Million

Transportation

- 229,600 people commute into Boston per day
- In January 2020, 1.5 million passengers deplaned at Boston Logan International Airport

Colleges and Universities

- 31 Colleges and Universities in Boston
- Roughly 138,857 students

Industries

- Largest industry is Healthcare and Social Assistance (18.3% of total employment)
- Second largest includes science and technology

Boston's Public Health & Healthcare Infrastructure

1 Public Health Agency

- ~1,100 employees
- ~40 programs
- Infectious Disease Bureau

22 Community Health Centers

1 Municipal Emergency Medical Service under BPHC

20 Licensed Hospitals

- 6 Level 1 Trauma Centers
- 12 Acute Care

Expansive Long-Term Care, Home Health, Specialty Care, Mental Health

Broad Community Coalition: faith-based organizations, food banks, schools, social services organizations, human services organizations, community development corporations, housing programs, youth and education programs, environmental programs, etc.

COVID-19

3/4/20 at 12pm



Past Public Health Preparedness Response

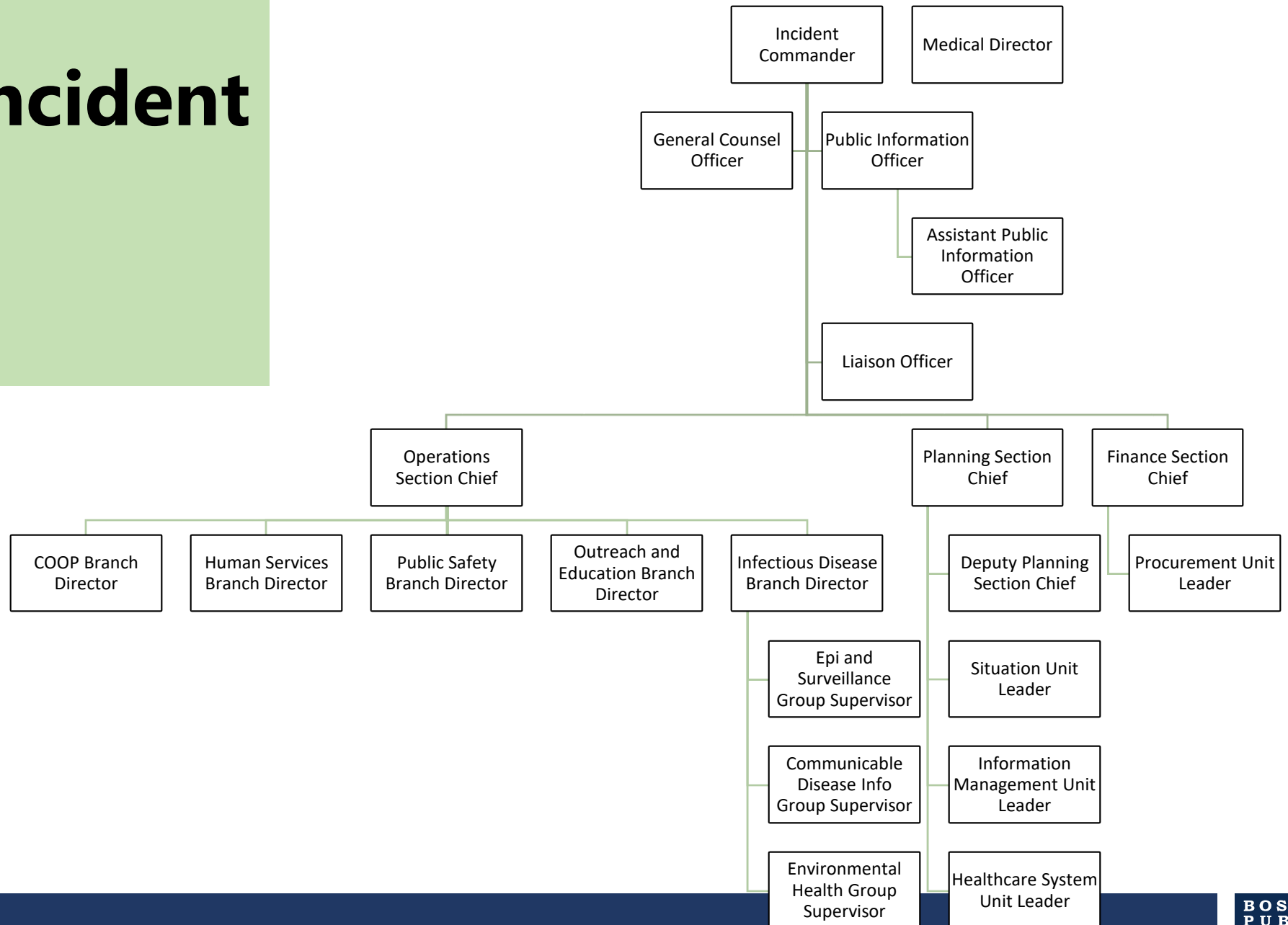
- Experience in response for Infectious Disease:
 - H1N1
 - Ebola
 - MERS
 - SARS
- Special Events – Boston Marathon
- 2013 Boston Bombings
- Extreme Weather
 - Hurricane Maria and Puerto Rico Evacuation

COVID-19

3/4/20 at 12pm



COVID-19 Incident Command Structure



COVID-19

3/4/20 at 12pm



Global Timeline

01/27/20

CDC Activated
Emergency
Operations
Center

01/30/20

WHO declared
COVID-19 a
Public Health
Emergency of
International
Concern

01/30/20

CDC confirmed
first person-to-
person spread in
the US

01/31/20

United States
declared
COVID-19 a
Public Health
Emergency

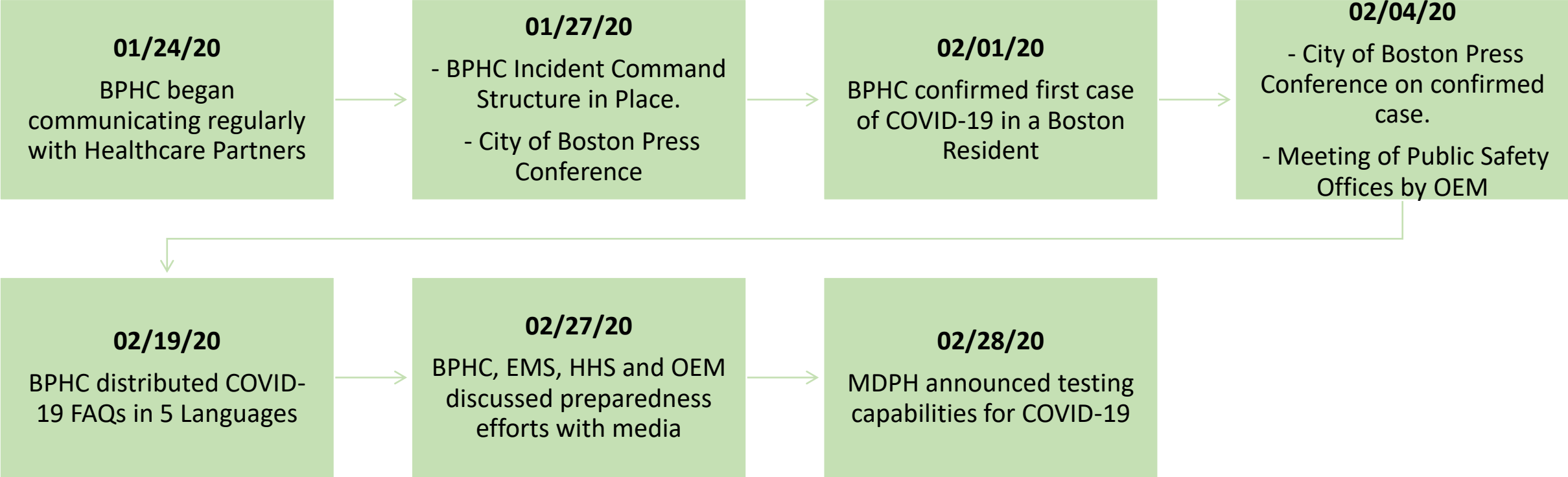
02/02/20

All Flights from
Mainland China
diverted to 11
US Airports

COVID-19

3/4/20 at 12pm

Boston Timeline



Current Incident Objectives

Manage BPHC COVID-19 Response

Maintain Situational awareness for Incident Management Team and other planning partners

Provide Public Health and Clinical Guidance to internal and external partners

Create and disseminate public information to residents and media

Conduct activities to minimize and stop any potential transmission of COVID-19 in the City of Boston

Coordinate and or provide resources to support response operations

Conduct activities to meet human services needs related to COVID-19

Partial List of Activities To-Date



Ongoing Planning Activities

BPHC Internal Planning

- Epidemiology and Surveillance
- Isolation and Quarantine
- Monitoring
- Clinical Guidance
- Essential Services
- Mass Dispensing
- Wraparound Services

BPHC Led with Partners

- Healthcare and Medical
- Schools and University Support
- Congregate Settings
- Human Services
- Community Engagement and Anti-Stigma
- Press and Public Information
- Community Education

OEM Led with BPHC Support

- Critical Resources
- City of Boston Coordination
- Transportation Support
- Private Sector Support

Questions?

COVID-19

Discussion:

- How can the Board of Health be involved?
- Are there any policy issues to be addressed?
- What suggestions do you have from your field?