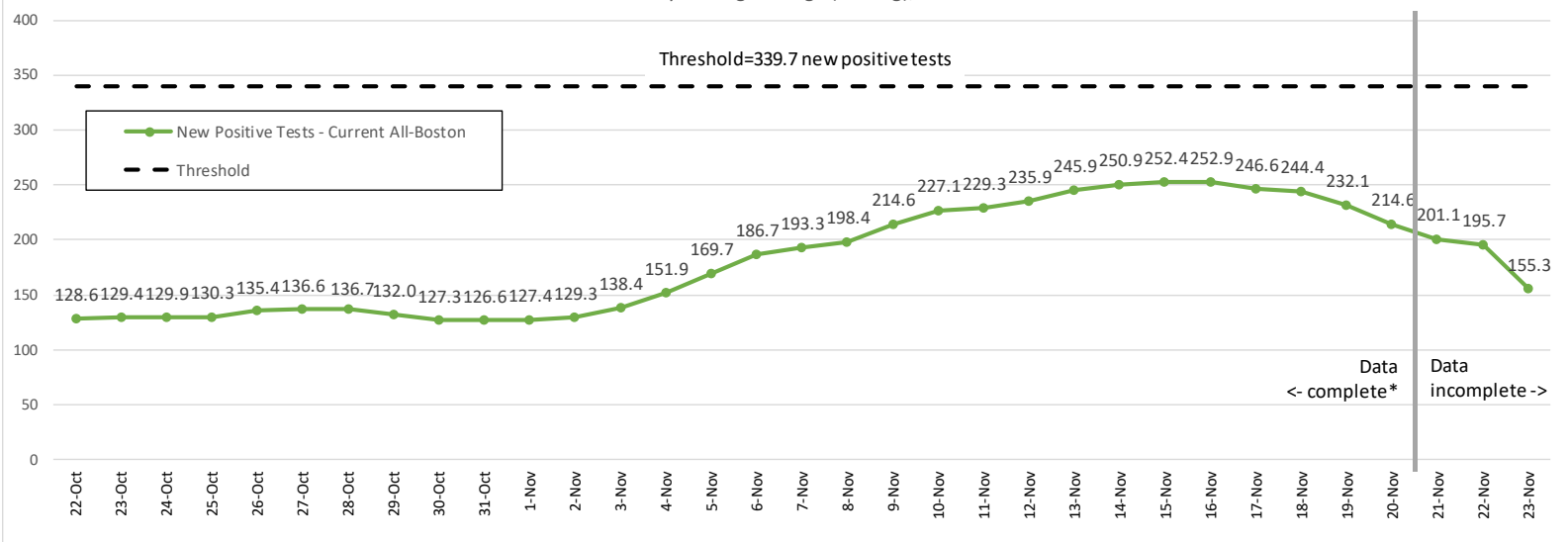


New Positive Tests for COVID-19 (molecular tests, person-current-level), Boston Residents

7-Day Moving Average (Trailing), Oct. 22 to Nov. 23



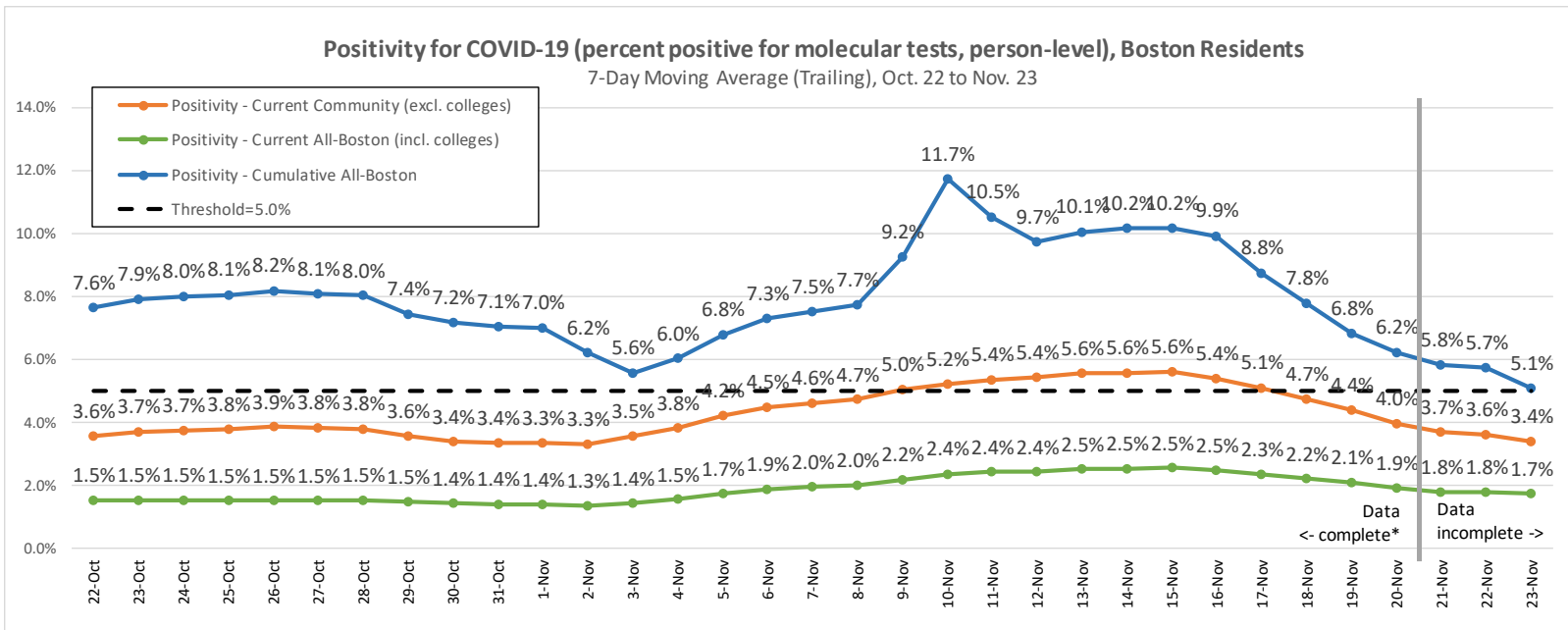
All-Boston COVID-19
New Positive Tests
 (7-day moving average)

November 20:
214.6 per day
(31.6 per 100K residents)

Number above goal:
146.7
 Goal:
 67.9

Number below threshold: 125.1
 Threshold:
 339.7 (50.0 per 100K residents)

Data downloaded November 24, 2020
 *Data to the left of vertical line assumed to be 95%-99% complete based on assessment of historical data.



Data downloaded November 24, 2020

*Data to the left of vertical line assumed to be 95%-99% complete based on assessment of historical data.

Current Community Positivity for COVID-19
(7-day moving average)

November 20:
4.0%

Percentage points below goal:
0.0

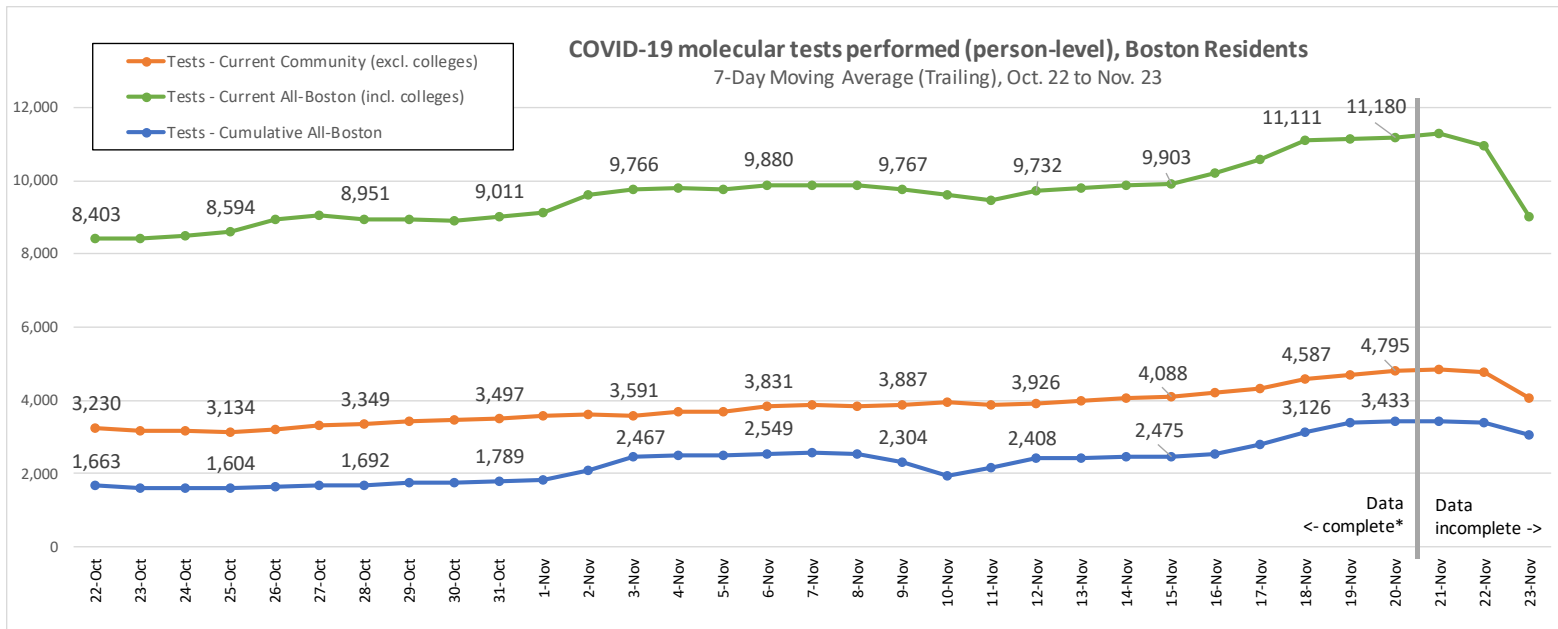
Goal: 4.0%

Percentage points below threshold:
1.0

Threshold: 5.0%

Number of Boston neighborhoods with positivity ≥ 8.0%:
0

Threshold: 4 NHDs with positivity ≥ 8.0%

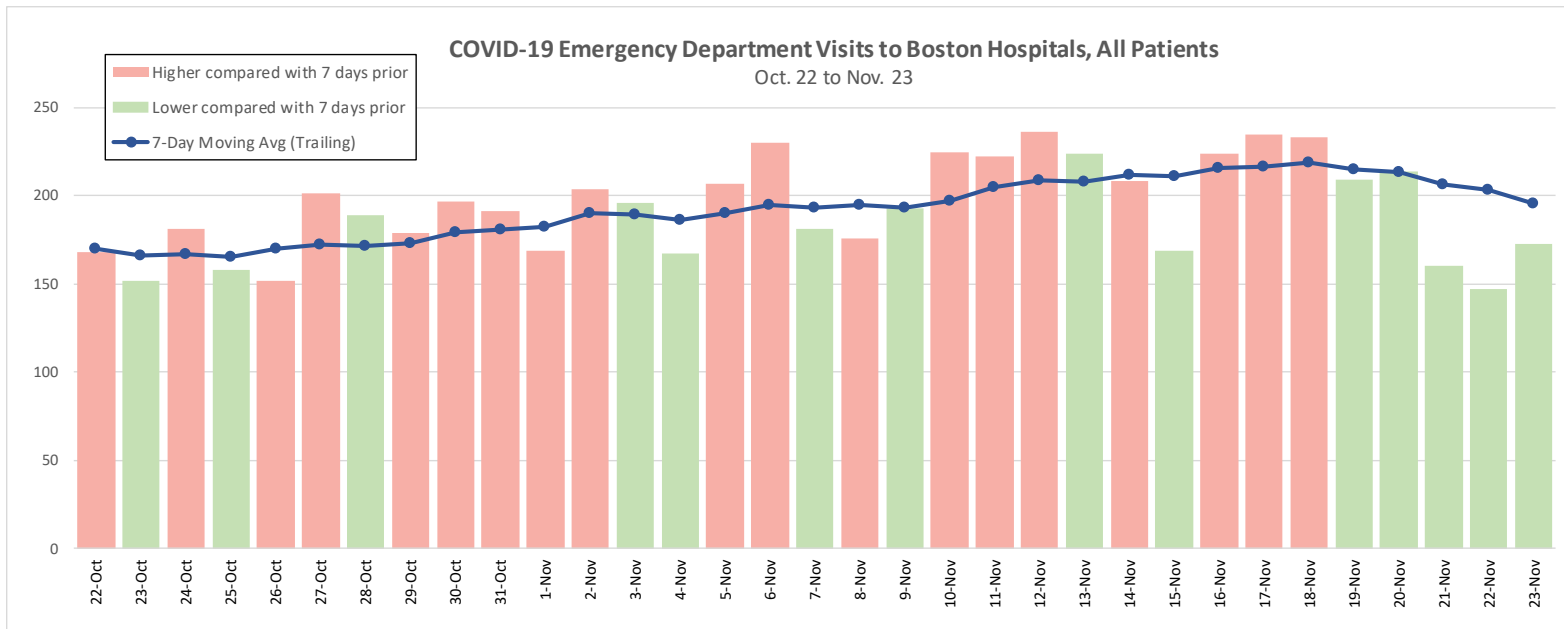


**Current Community
COVID-19 Molecular Tests
Performed**

**November 20:
4,795 per day**
(7-day moving average)

**Number of consecutive
weeks with decrease:
0 (as of Nov. 20)**
Threshold: Decreasing for 3 or
more consecutive weeks

Data downloaded November 24, 2020
 *Data to the left of vertical line assumed to be 95%-99% complete based on assessment of historical data.



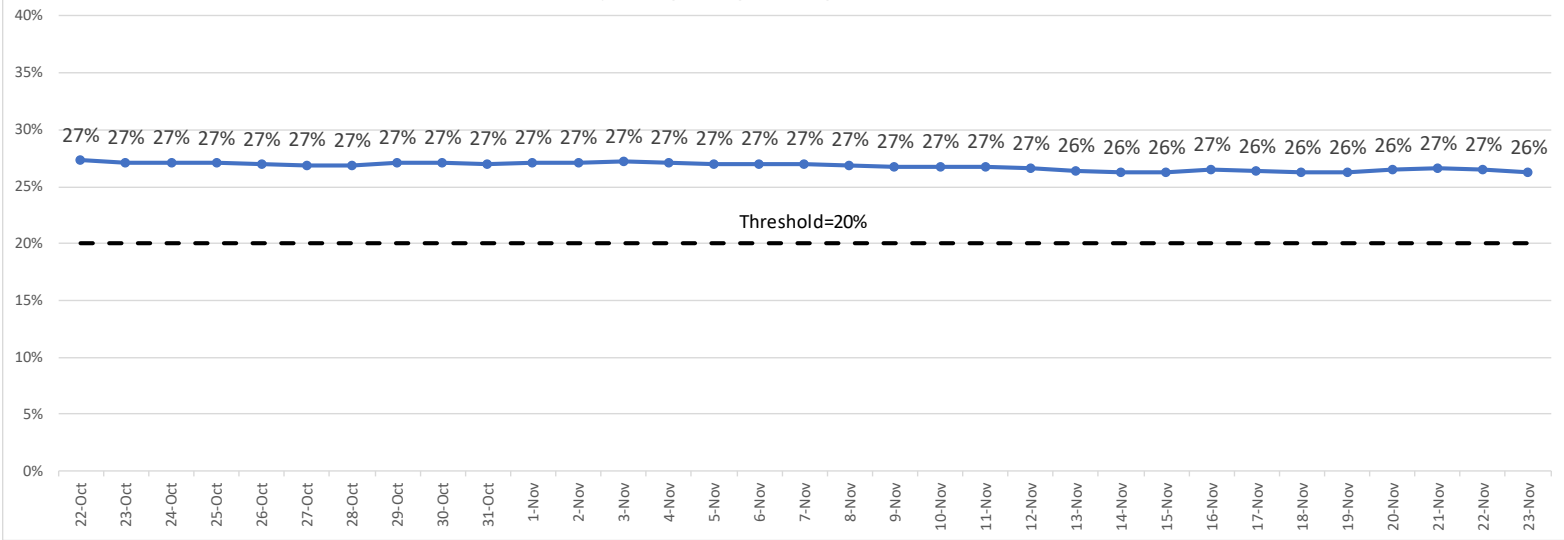
COVID-19 ED visits

November 23:
195.9 ED visits
 (7-day moving average)

Number of consecutive days higher than same day of previous week:
0 (as of Nov. 23)
 Threshold: 7 consecutive days higher than same day of previous week (i.e., red bars)

Percentage of Available Adult ICU and Adult Medical/Surgical Beds at Boston Hospitals, All Patients

7-day Moving Average (Trailing), Oct. 22 to Nov. 23



Percentage of Available Adult ICU and Adult Medical/Surgical Beds

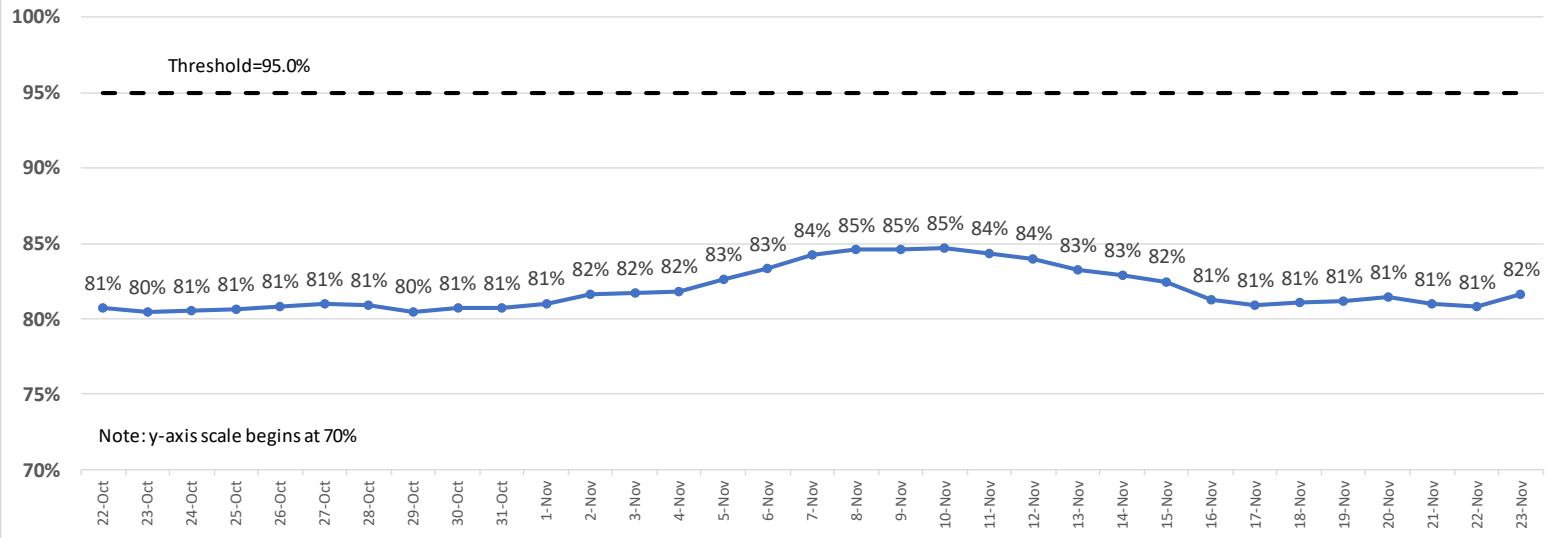
November 23: 26%

Number of consecutive days moving average below threshold (20%): 0 (as of Nov. 23)

Threshold: 5 consecutive days below 20%

Percentage of Occupied Adult Non-Surge ICU Beds* at Boston Hospitals, All Patients

7-day Moving Average (Trailing), Oct. 22 to Nov. 23



* Includes staffed adult ICU beds. Does not include staffed surge ICU beds or unstaffed surge ICU beds. Assumes that all ICU beds are used before any surge ICU bed.

Percentage of Occupied Adult Non-Surge ICU Beds

**November 23:
82%**

**Number of consecutive days moving average above threshold (95%):
0 (as of Nov. 23)**

Threshold: 5 consecutive days above 95%